
HOGGI[®]



DURO / DURO Cross Service instructions

en

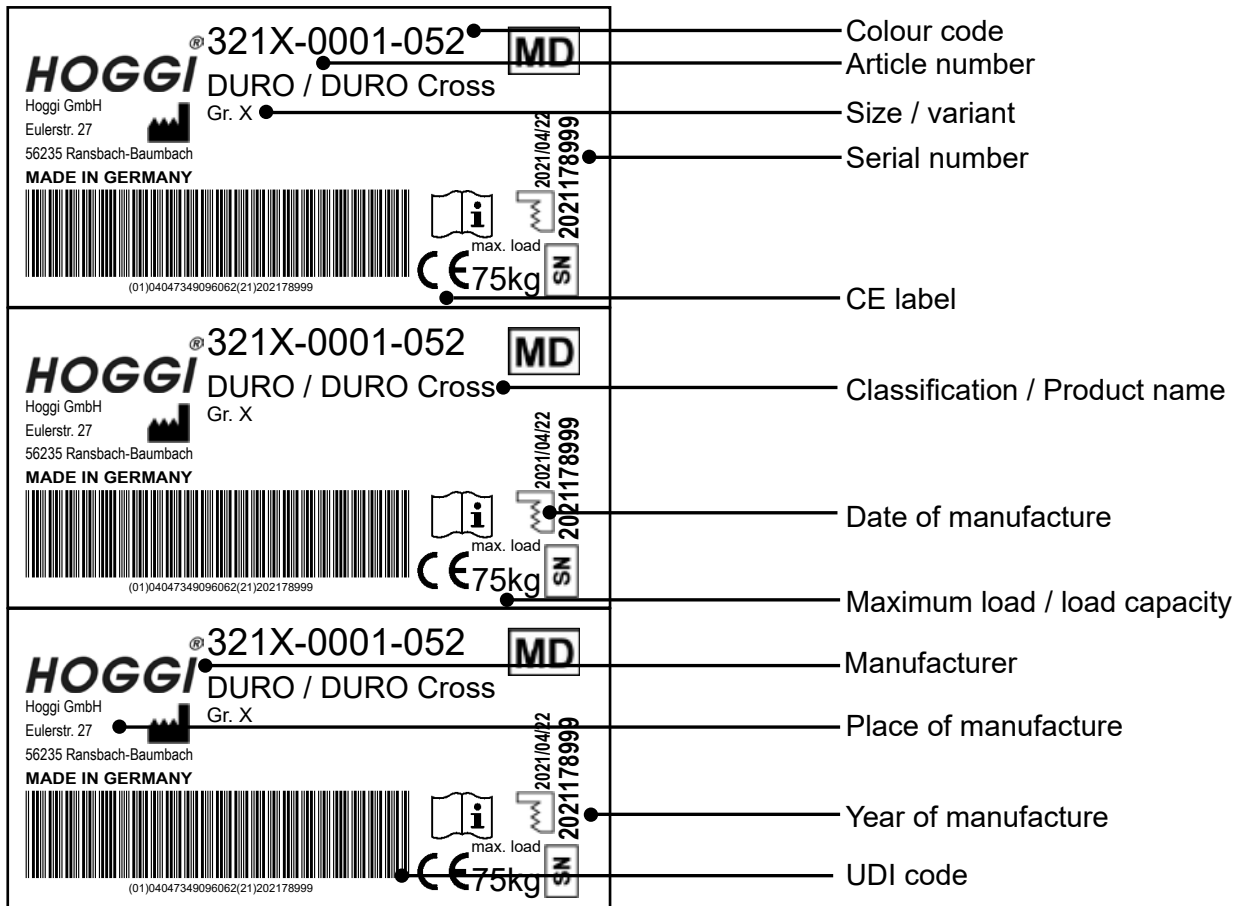
DURO / DURO Cross - Service and maintenance instructions

Content	page
1 Model identification & basic configuration	
1.1 Model identification (label)	4
1.2 Basic configuration	4
2 Overview DURO / DURO Cross	5-6
3 Common information	7
3.1 Preface	7
3.2 Application	7
3.3 Declaration of conformity	7
3.4 Terms of warranty	7
3.5 Customer service	8
3.6 Service and repairs	8
3.7 Packing and shipping instructions	8
4 Safety instructions	9
4.1 Meaning of symbols	9
4.2 Common safety instructions	9
5 Required tools and maintenance schedule	10
5.1 Required tools	10
5.2 Maintenance schedule	11-12
6 Seat settings	13
6.1 Seat width	13
6.2 Seat depth	14-15
6.3 Back height	15
6.4 Seat angle	16
6.5 Recline adjustment	16
6.6 Thorax width	17
6.7 Headrest width	17-18
6.8 Footrest angle	18
7 Maintenance schedule	19
7.1 Front frame	19
7.2 Rear frame and rear axle	19
7.3 Push bar	19-20
7.4 Seat and back bearing	20
7.5 Seat surface and seat frame	20
7.6 Thigh supports	21
7.7 Hip supports	21
7.8 Back base	21
7.9 Back insert	22
7.10 Individual upholstery system	22

7.11	Footrest hanger	22
7.12	Footrest holder	22-23
7.13	Footrests	23
7.14	Front wheels	23-24
7.15	Swivel lock	24
7.16	Rear wheels	24
7.17	Braking system	24-26
7.18	Accessory bag	26
7.19	Tie down kit	26
7.20	Headrest pads	26-27
7.21	Thorax pads	27
7.22	Abduction block	27
7.23	Retainer for accessories	27
7.24	Grab rail	27
7.25	Therapy tray	28
7.26	Belt fixations	28-29
7.27	Winter warmer	29
7.28	Canopy	30
8	Operating life	31
9	Specifications	31

1.1 Model identification

The **label** is attached on the upper side of the seat plate (front left).

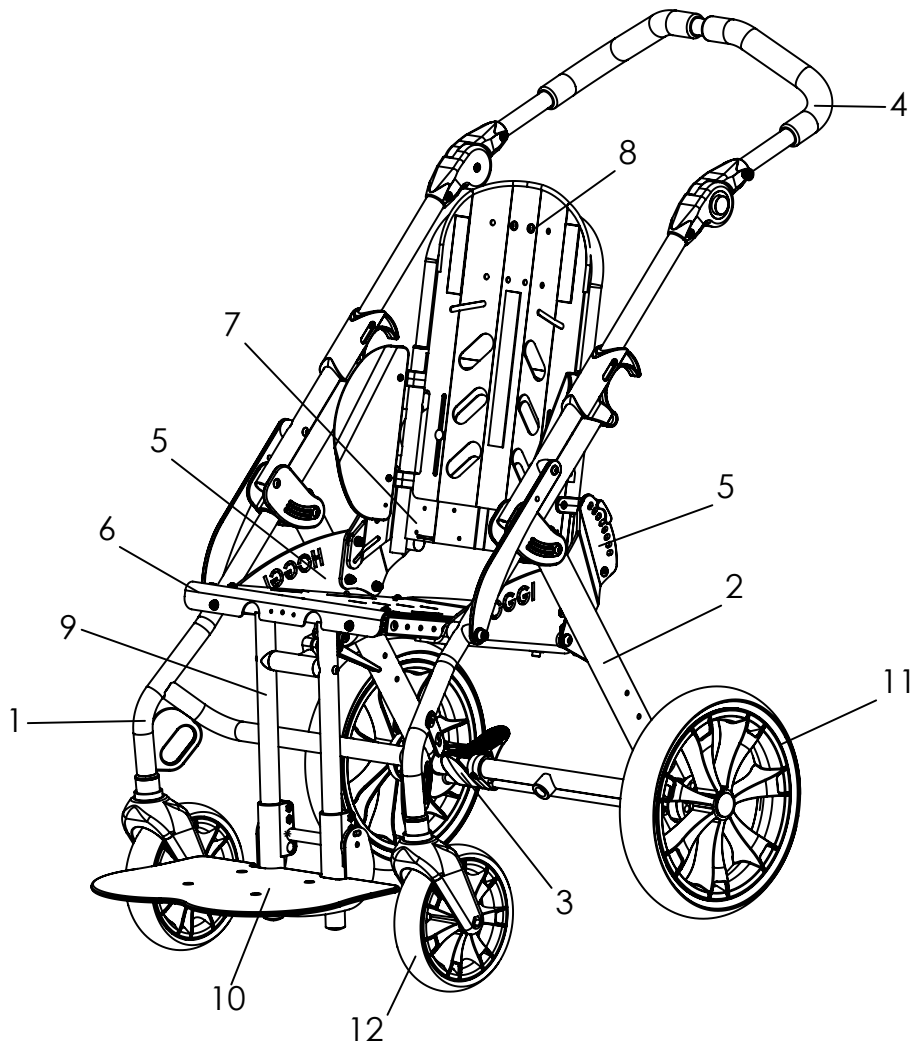


1.2 Basic configuration

- DURO // DURO Cross rehab pushchair
- Front and rear wheels with air or PU tires
- Drum brake wheels with PU tyres or pneumatic tyres (only for DURO Cross)
- Padding (IUS)
- Thigh supports
- Support angle
- Footrest hanger
- Foot rest bracket und footrest with heel stop

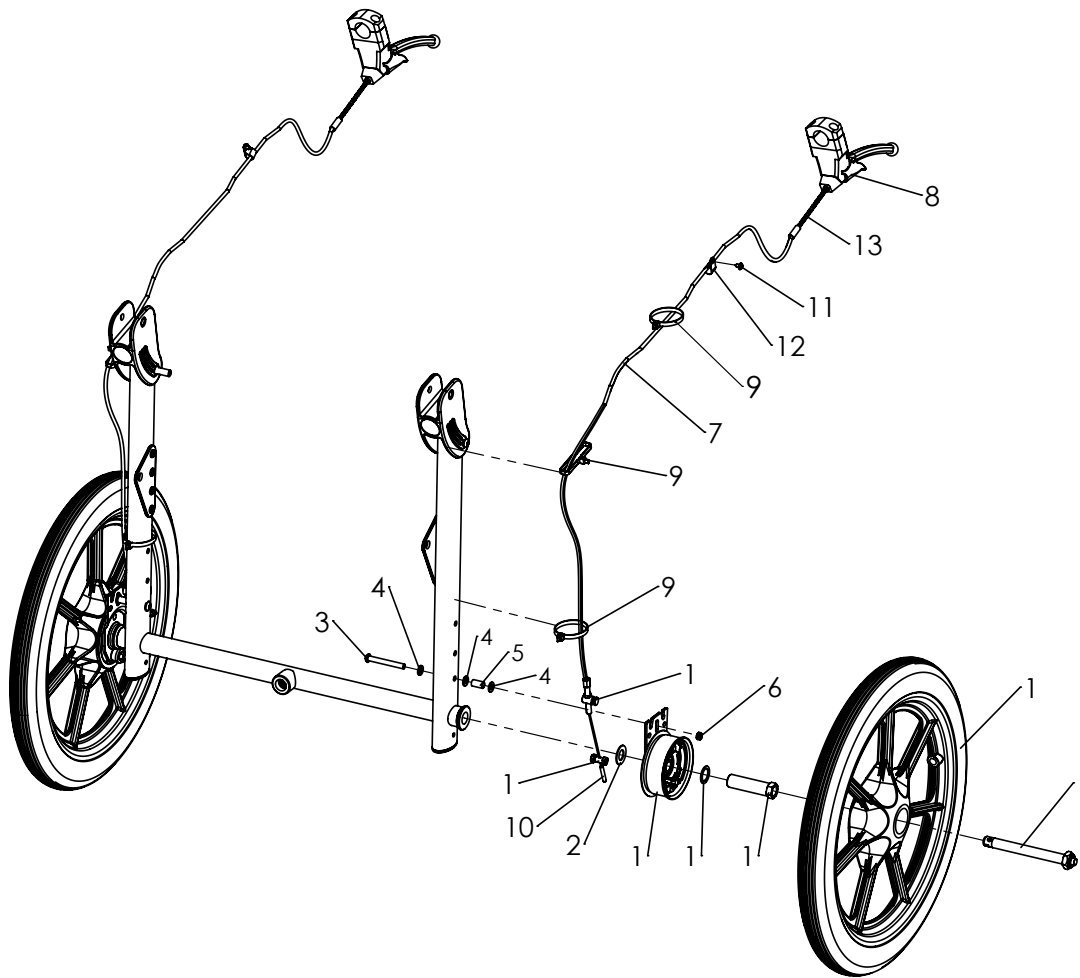
2 Overview DURO

2.1 DURO



Pos	Article number	Component group	Page
1	3211-1100	Front frame DURO size 1	5
	3212-1100	Front frame DURO size 2	
2	3211-1200	Rear frame DURO size 1	6
	3212-1200	Rear frame DURO size 2	
3	3211-1300E	Break size 1	7
	3212-1300E	Break size 2	
4	3211-1400	Pushbar DURO size 1	10
	3212-1400	Pushbar DURO size 2	
5	3211-1500	Seat and backrest retainer	11
6	3211-1700	Seat surface DURO size 1	12
	3212-1700	Seat surface DURO size 2	
7	3211-2300	Back base DURO size 1	15
	3212-2300	Back base DURO size 2	
8	3211-2800	Back insert DURO size 1	17
	3212-2800	Back insert DURO size 2	
9	3211-2400	Footrest hanger DURO size 1	19
	2312-2400	Footrest hanger DURO size 2	
10	3245-4302	Foot rest	20
11	12xx-xxxx	Rear wheel	24
12	12xx-xxxx	Front wheel	24

2.2 DURO Cross



Pos	Article number	Articel description	Quantity	Unit
1	1219-0040	Pneumatic wheel black 16 x 1,75", black 5 spoke, drum brake left side	1	Pc.
	1219-0041	Pneumatic wheel black 16 x 1,75", black 5 spoke, drum brake right side	1	Pc.
	1229-0040	PU-wheel black 400x40, black 5 spoke, drum brake left side	1	Pc.
	1229-0041	PU-wheel black 400x40, black 5 spoke, drum brake right side	1	Pc.
2-13	3214-1290E	Duro cross break assembly parts	1	Set
2	1052-0012	Spring washer B12	2	Pc.
3	1029-0650	Button head socket screw M6x50	2	Pc.
4	1051-0006	Washer A6,4	6	Pc.
5	1114-0018	Bushing 8x0,8x14,5	2	Pc.
6	1049-0066	BILOC-nut M6	2	Pc.
7	1209-0001	Bowden wire set, complete 112cm cable	2	Pc.
8	1209-0008	Brake lever 80° manually locking 22 mm (for push-bar)	2	Pc.
9	1089-0004	Cable tie, black, 5x180	2	Pc.
10	1209-0007	End cap aluminium for Bowden cable wire	2	Pc.
11	1039-0001	Screw for plastic, cross rcessed pan head w. flange 4x10	2	Pc.
12	1149-0003	Cable clip d 6,4 / 8 mm, black	6	Pc.
13	1205-0054	Bowden cable guide flex	6	Pc.

3 Common Information

3.1 Preface

Thank you for selecting the **DURO / DURO Cross** rehab pushchair. We have designed this high-quality product to make your life safer and easier, and we've included this manual to help you use and care for it.

Please read the following instructions to make sure you use this product as recommended. If you have any further questions, or if you have any problems, please contact your healthcare provider.

We hope that **DURO / DURO Cross** meets your expectations.

We reserve technical modifications regarding the specified model in this manual. Before using the rehab pushchair the first time, this manual has to be read and understood by patient and support personnel in order to ensure a safe handling with the rehab pushchair.

Regular maintenance is important - it increases safety and prolongs the life of the product. Every rehab product should be checked and serviced once a year.

However, it is recommended to check, readjust and, if necessary, service products with a high frequency of use, with users in growth or users with a changing clinical picture at 6-month intervals.

Only original spare parts should be used for all service and maintenance work.

The service and maintenance work described here should only be carried out by trained specialist personnel and not by the user of the aid.

These service and maintenance instructions refer to the respective spare parts catalogs and operating instructions of the products described. Please use all documents together.

Use the maintenance schedule (Chapter 5.2, Checklist to tick off) as a copy template.

Retain completed maintenance schedules and provide a copy to the customer.

DURO	User manual	1910-0048-EN
DURO	Spare parts catalog	1910-1048-EN

3.2 Application

Rehab pushchairs, paediatric postural positioning systems or strollers are appropriate for children and adolescents who are unable to walk or who have a walking impediment and thus requiring mobility assistance.

Assistance may be required due to:

- Atypical muscle tone
- Loss of limbs (dysmelia/lower limb amputation)
- Limb defect and / or deformity
- Joint contractures
- Joint defects
- Other diseases

The **DURO / DURO Cross** rehab pushchair is able to be used indoor and outdoor as well as for further service. For further service the product has to be cleaned and sanitised efficiently. Afterwards the product has to be checked concerning condition, wearout and damage by an authorised technician. All damaged and inappropriate parts need to be changed. Please see also the service manual for detailed information.

3.3 Declaration of Conformity

HOGGI GmbH as manufacturer declares under sole responsibility that the rehab-pushchair for kids and adolescents **DURO / DURO Cross** meets the general safety and performance requirements to Annex I of the Regulation (EU) 2017/745 of the European Parliament and of the Council. Harmonised European Standards have been applied. Applicable harmonized standards have been applied. **DURO / DURO Cross** meets the requirements of ISO 7176-8, DIN EN ISO 12182 and DIN EN ISO 12183.

3.4 Terms of Warranty

Warranty applies only when the product is used according to the specified conditions and for the intended purposes, following all manufacturer's recommendations. The manufacturer is not responsible for damages caused by components and spare parts not approved by the manufacturer. See also § 8 of terms and conditions on: www.hoggi.de

3.5 Customer service

Our customer service will be happy to answer any technical questions you may have. Please refer to the last page for contact addresses and telephone numbers.

3.6 Service and repairs

Service and repairs on the **DURO / DURO Cross** rehab pushchair may only be carried out by your specialist dealer. In case of problems, contact your responsible specialist dealer. In case of repairs, you will only receive original spare parts there. Spare parts and replacement units are available during the entire service life of the product, but only for a maximum of 2 years after the sale of the last product in this series.

The wheelchair is custom made for the first time user. Therefore, no replacement wheelchair is available in the initial configuration. In order to ensure a correct spare parts delivery the serial no. of your wheelchair is required. We are happy to help you find a dealer close to you.

You can reach us at: info@hoggi.de

3.7 Packing and shipping instructions

If **DURO / DURO Cross** has to be sent back to the manufacturer for repair or exchange, the product must be thoroughly cleaned/disinfected beforehand and put in a hygienically safe condition. Packaging is done by wrapping the product in a clean film, ideally with air cushions and the subsequent use of a sufficiently large cardboard box, so that no transport damage can occur.

4 Safety instructions

4.1 Meaning of symbols



Caution!
Warning of possible danger of accident and injury. Warning of possible technical damage.



Information!
About use of product.



Information!
For service-personnel.



Attention!
Read manual before use!

4.2 Common safety instructions

For all maintenance and repair work, you should generally observe a few points:



Attention!
Familiarize yourself with the functions of the product. If you are not familiar with the product, study the user manual before testing. If no user manuals are available, request them from us. You can also download documents from our homepage at: www.hoggi.de



Attention!
Study the service and maintenance instructions before starting work.



Attention!
Use suitable tools (see page 4 ff.).



Attention!
Wear suitable clothing and, if necessary, gloves and protective goggles.



Attention!
Secure the product from tipping over or falling down, e.g. from the workbench.



Attention!
Clean / disinfect the product before starting the test. If necessary, observe the instructions in the user manual and product-specific test instructions.



Note!
Screws and nuts with thread locking are used for a large number of screw connections. If you have to open such screw connections, replace the respective nut or screw with one with new thread locking. If new nuts or bolts with thread locking are not available, use liquid thread locking compound with medium strength (e.g. Loctite 241 or Euro Lock A24.20).

5 Required tools and maintenance schedule

5.1 Required tools

The following list shows the tools and utilities required for service.



Reversible ratchet and sockets
size 8-24



Torque wrench
Measuring ranges 5-50 Nm



Wrench
Size 6 - 24



Hexagon wrench
Gr. 3 -



Screwdriver
Blade width 2.5 3.5 and 5.5



Phillips screwdriver
Size 2



Plastic hammer



Hammer approx. 300 g



Carpet knife with sickle and
standard blade



Side cutter



Liquid thread locking
„medium strength“



Riveting pliers for rivets up to
5 mm

5.2 Maintenance schedule		DURO / DURO Cross Basic product		Customer:	
Pos.	Area	Check (Checklist to tick off <input checked="" type="checkbox"/>)			
	Serial number:	1.) Function / Setting (siehe Bedienungsanleitung)	2.) none damage / deformation	3.) Screw connections	
Basic product					
1.1	Front frame		<input type="checkbox"/>	<input type="checkbox"/>	<input type="checkbox"/>
1.2	Rear frame and rear axle	- Parking brake	<input type="checkbox"/>	<input type="checkbox"/>	<input type="checkbox"/>
1.3	Push bar	- Folding mechanism	<input type="checkbox"/>	<input type="checkbox"/>	<input type="checkbox"/>
		- Locking	<input type="checkbox"/>	<input type="checkbox"/>	<input type="checkbox"/>
		- Angle adjustment of the push handle	<input type="checkbox"/>		
1.4	Seat and back bearing	- Back angle adjustment	<input type="checkbox"/>	<input type="checkbox"/>	<input type="checkbox"/>
		- Seat angle adjustment	<input type="checkbox"/>	<input type="checkbox"/>	<input type="checkbox"/>
		- Seat depth adjustment	<input type="checkbox"/>	<input type="checkbox"/>	<input type="checkbox"/>
1.5	Seat base and seat frame	- Seat depth adjustment	<input type="checkbox"/>	<input type="checkbox"/>	<input type="checkbox"/>
1.6	Thigh support/ Hip support	- Seat width adjustment	<input type="checkbox"/>	<input type="checkbox"/>	<input type="checkbox"/>
		- Depth adjustment hip supports	<input type="checkbox"/>	<input type="checkbox"/>	<input type="checkbox"/>
		- Remove (hip supports)	<input type="checkbox"/>	<input type="checkbox"/>	<input type="checkbox"/>
1.7	Back base	- Recline	<input type="checkbox"/>	<input type="checkbox"/>	<input type="checkbox"/>
		- Remove back	<input type="checkbox"/>	<input type="checkbox"/>	<input type="checkbox"/>
1.8	Back insertion	- Back height adjustment	<input type="checkbox"/>	<input type="checkbox"/>	<input type="checkbox"/>
1.9	Individual upholstery system	- Damage	<input type="checkbox"/>	<input type="checkbox"/>	
1.10	Footrest	- Angle adjustment	<input type="checkbox"/>	<input type="checkbox"/>	<input type="checkbox"/>
		- Height adjustment	<input type="checkbox"/>	<input type="checkbox"/>	<input type="checkbox"/>
		- Footrest angle	<input type="checkbox"/>	<input type="checkbox"/>	<input type="checkbox"/>
		- Locking (optional)	<input type="checkbox"/>	<input type="checkbox"/>	<input type="checkbox"/>
1.11	Front wheels	- Tires	<input type="checkbox"/>	<input type="checkbox"/>	<input type="checkbox"/>
		- Air pressure	<input type="checkbox"/>		
		- Running behavior of the wheels	<input type="checkbox"/>		
		- Swivelling the wheel forks	<input type="checkbox"/>		
1.12	Swivel lock	- Locking device	<input type="checkbox"/>	<input type="checkbox"/>	<input type="checkbox"/>
		- Straight run	<input type="checkbox"/>	<input type="checkbox"/>	<input type="checkbox"/>
1.13	Rear wheels	- Tires	<input type="checkbox"/>	<input type="checkbox"/>	<input type="checkbox"/>
		- Air pressure	<input type="checkbox"/>		
		- Running behavior of the wheels	<input type="checkbox"/>		
		- Quick release	<input type="checkbox"/>		
1.14	Braking system	- Brakes	<input type="checkbox"/>	<input type="checkbox"/>	<input type="checkbox"/>
	Do the settings on the base frame meet the user's requirements?		<input type="checkbox"/>		
Notes:					

5.2 Maintenance schedule		DURO / DURO Cross Accessories		Customer:	
Pos.	Area	Check (Checklist to tick off <input checked="" type="checkbox"/>)			
	Serial number:	1.) Function / Setting (siehe Bedienungsanleitung)	2.) none damage / deformation	3.) Screw connections	
Accessories					
2.1	Storage bag	- Fold with	<input type="checkbox"/>	<input type="checkbox"/>	<input type="checkbox"/>
2.2	Tie down kit	- Damages	<input type="checkbox"/>	<input type="checkbox"/>	<input type="checkbox"/>
2.3	Headrest pads	- Width adjustment	<input type="checkbox"/>	<input type="checkbox"/>	<input type="checkbox"/>
2.4	Thorax support	- Width & height adjustment	<input type="checkbox"/>	<input type="checkbox"/>	<input type="checkbox"/>
2.5	Abduction block (accessories)			<input type="checkbox"/>	<input type="checkbox"/>
2.6	Retainer		<input type="checkbox"/>	<input type="checkbox"/>	<input type="checkbox"/>
2.7	Grab rail (accessories)	- Locking (tripod springs)	<input type="checkbox"/>	<input type="checkbox"/>	<input type="checkbox"/>
2.8	Therapy tray (accessories)	- Locking (tripod springs)	<input type="checkbox"/>	<input type="checkbox"/>	<input type="checkbox"/>
		- Angle adjustment	<input type="checkbox"/>		
		- Depth adjustment	<input type="checkbox"/>		
2.9	Belt fixings: Lap belt, five-point harness, foot belts, ankle huger, groin strap, fixation jacket, chest-shoulder pad	- Closures	<input type="checkbox"/>	<input type="checkbox"/>	<input type="checkbox"/>
2.10	Winter warmer	- Damage	<input type="checkbox"/>	<input type="checkbox"/>	
2.11	Canopies (accessories)	- Angle adjustment of canopy	<input type="checkbox"/>	<input type="checkbox"/>	<input type="checkbox"/>
		- Plug connection to the adapter	<input type="checkbox"/>		
	Do the seat unit settings meet the user's requirements?		<input type="checkbox"/>		
Notes:					
The maintenance was performed by: on:					



6. Seat settings

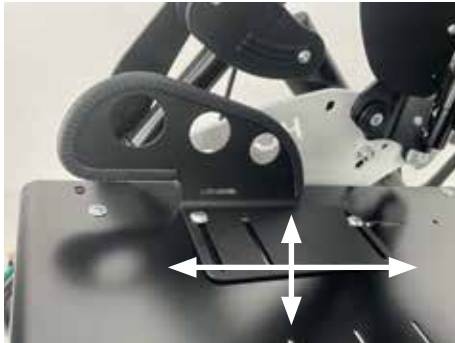
6.1 Seat width

The seat width of the DURO / DURO Cross can be adjusted by moving the thigh - or the hip supports.

The following adjustment ranges result for the two sizes:

Size 1: 23 - 34 cm

Size 2: 28 - 39 cm



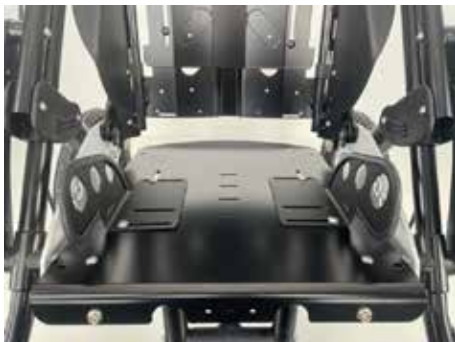
The pad is secured to the seat panel by a screw connection.

The desired seat widths can be achieved by shifting in 2 slotted holes. In addition, the depth positioning can be adjusted.



Wing nut screws on the underside of the seat plate secure the connection.

An additionally attached nut serves as protection against loss and should always be mounted.



Adjustment range narrow and front



Adjustment range wide and rear



6.2 Seat depth

Bingo Evolution offers an enormous ability to grow with the seat depth. The following adjustment ranges result for the two sizes:

Size 1: 26 - 40 cm

Size 2: 31 - 45 cm

Measuring point front edge of seat panel to back tube



In order to adjust the seat depth, a total of 4 screw connections must be loosened. These are located on the underside where the seat frame is bolted to the support brackets.



First, the front screws are loosened.



Then loosen the rear screw connections.



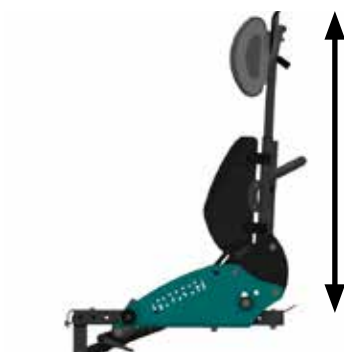
The seat panel can now be moved forwards or backwards to the desired size.

Finally, tighten all screw connections again!

Smallest seat depth



Largest seat depth



6.3 Back height

Depending on the size, DURO / DURP Cross offers different adjustable back heights.

Size 1: 45 - 63 cm

Size 2: 61 - 83 cm



By opening the indicated wing nut screws, the upper back section can be pulled out or pushed in opposite the base.

Back height low



Back height low

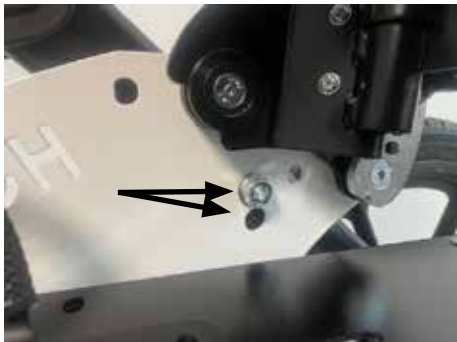


Back telescoped



6.4 Seat angle

DURO / DURO Cross allows two different seat angles to be preset. 16° and 20°. The adjustment is made by screwing the rear strut opposite the support angle.



Depending on which of the indicated holes the screw connection is made, a different seat angle is set.

Screw connection in the upper hole: 20°
Screw connection in the lower hole: 16°



6.5 Recline

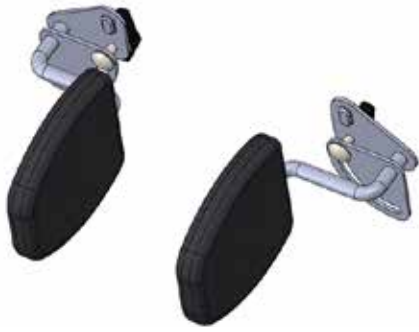
The back angle of the DURO / DURO Cross can be adjusted between 78° and 120° in 8 positions relative to the seat surface.



The desired back angle can be set with the help of the locking bolt.



In addition, the back section can also be easily folded down and removed.



6.6 Width thorax

Optional thorax pelotte pads can be used to generate lateral upper body support. The pads can be adapted precisely to the user. They are adjustable in width, height and angle.



By loosening the indicated wing nut, the distance between both pads and also the height can be adjusted.

The minimum and maximum adjustable distance for the sizes:

Size 1: 12-22 cm
Size 2: 17-27 cm



By loosening the front screw connection the angle of the pad can be adjusted.



6.7 Width headrests

DURO & DURO Cross can be equipped with the standard headrests, as well as with a low form

Low form:

Provides a total adjustment range of 2 cm by sliding in 1 cm slotted holes in the pad support. Distance between supports:

Size 1: 14-16 cm
Size 2: 18-20 cm



Standard:

In addition to the adjustment range in the beam, offers an additional adjustment possibility by gluing in 3x1 cm wide foam inserts per side.



Adjustment range of the slotted holes in the pad support.



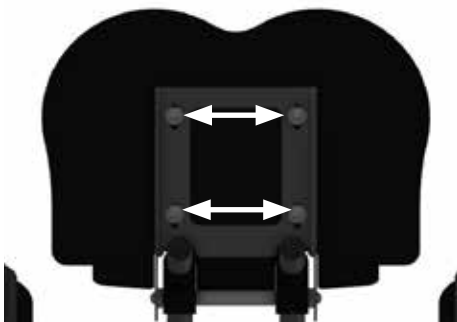
3 foam inserts with self-adhesive film. If the inserts are glued to the inside of the pad support, the distance between the sides is reduced by 1 cm. This means that with a maximum of 6 inserts, the area can be additionally reduced by a total of 6 cm. This results in for:

Size 1: 8-16 cm
Size 2: 13-21 cm



6.8 Footrest angle

The footrest angle is preset to 90°. The adjustment range is +/- 10° (80° - 100°).



After loosening the four marked screw connections on the footrest holder the footrest can be adjusted in depth.

This changes the anchor point of the footrest and thus also the footrest angle. The further the footrest is pulled out to the front, the the greater the angle. If the procedure is reversed the angle decreases accordingly.



7. Maintenance schedule

7.1 Front frame

- Check for general damage, bending
- Checking the screw connections to the support bracket



7.2 Rear frame and rear axle

Rear frame DURO

- Check for general damage
- Brake function of the parking brake
- Brake rod bearing and brake pedal retention
- Checking the screw connections to the slider, rear axle tube and to the connector



Rear frame DURO Cross

- Check for general damage
- Checking the screw connections to the slider and the clamp



7.3 Push bar

- Check for general damage
- Folding in via the release button
- Angle adjustment of the upper part of the push bar via the ratchet joints
- Latching of the push bail in unfolded state



- Locking of the push bar in the unfolded state, bolt must release from the lock when folded and lock in the rear frame joint when unfolded.

Check of the screw connections:

- Lower screw connection of the lower part of the push bar to the slider
- Fastening of the release button
- Rivet connection of the ratchet joint



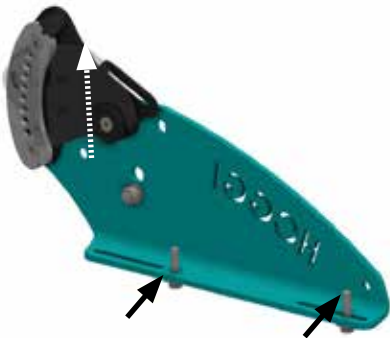
7.4 Seat and back bearing

- Check for general damage
- Seat depth adjustment
- Back angle adjustment
- Folding in and removing the back



Check of the screw connections:

- Screw connection of support brackets to the front frame
- Screw connection of support brackets to the seat frame

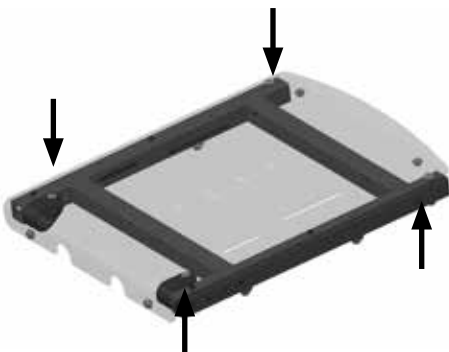


7.5 Seating surface and seat frame

- Check for general damage
- Check of the seat depth adjustment



- Check of the screw connections from the seat panel to the seat frame
- If present, inspection of riveted connections or attached brackets for straps



7.6 Thigh supports



- Check for general damage
- Depth and width adjustment of the pad support
- Check of the screw connections to the seat panel

7.7 Hip supports



- Check for general damage
- Depth and width adjustment of the pad support
- Check of the screw connections to the seat panel



- Removing the hip support

7.8 Back base

Removable back base



- Check for general damages
- Removing the back part
- Checking the screw connection to the guide block



- Back angle adjustment via locking pin pull



7.9 Back insert

Size 1/2

- Check for general damage
 - Damage to the edge protection
 - Height adjustment / telescoping
 - Removal of the slide-in unit
- Check of the screw connection for height adjustment



7.10 Individual upholstery system

- Check for general damage or impurities
- Wear of the upholstered surfaces



7.11 Footrest hanger

Functional test:

- Check for general damage
- Angle adjustment
- Checking the dynamics if installed
- Screw connection to the seat frame



7.12 Footrest holder

Standard

Functional test:

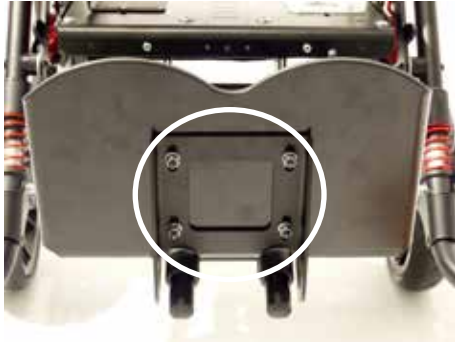
- Height adjustment
- Check for general damage
- Swivel mechanism of the screwed footrest
- Correct adjustment of the foot angle
- Sliding of the holder on the tubes

With interlock

Functional test:

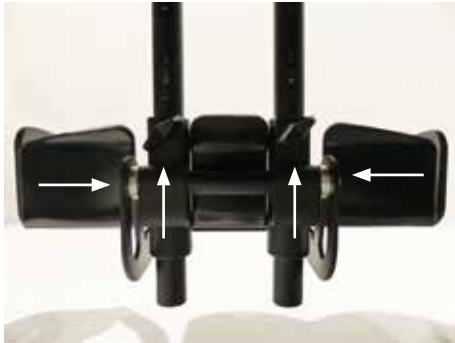
- Height adjustment
- Check for general damage
- Swivel mechanism of the screwed footrest
- Correct adjustment of the foot angle
- Sliding of the holder on the tubes
- Locking bolt pull with locking latches, tension of the rope





Check of the screw connections:

- Screw connection to the footrest with correct angle adjustment



- Screws for lower leg length adjustment
- Screwing of the swivel mechanism



7.13 Footrest

Footrest standard with heel edge

Functional test:

- Check for general damage
- Screw connection to the footrest support

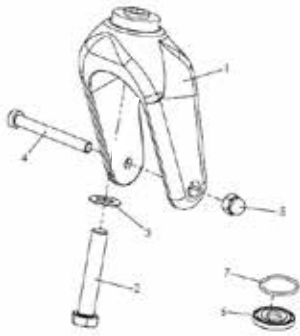


7.14 Front wheels

- Plastic or aluminium fork
- Check for general damage
- Checking the tread or profile (cracks, heavy wear)
- Impurities
- Checking the air pressure in the case of pneumatic tyres



- Camber of the wheel worn too much



Check of the bolted connections:

- Screw connection of the wheel axle
- Bolting of the steering fork axle to the frame



Make sure that the steering fork is set up as follows!

The sealing washer with the O-ring prevents excessive „fluttering“ of the steering forks.
The screw must be tightened accordingly with 40 Nm!!



7.15 Swivel lock

- Check for general damage
- Check of the latch
- Check of the straight run



7.16 Rear wheels

- Air or PU tyres
- Check for general damage (storage)
- Running behaviour of the wheels
- Checking the treads and tyre pressure (if pneumatic tyres)
- Checking the quick release fastener



7.17 Braking system

DURO / DURO Cross can be equipped with 3 brake variants!

Parking brake:

- Basic configuration
- Not in combination with drum brake wheels
- Easily replaceable
- Locking when locked?
- Pivoting



Brake for attendant

- Check for general damage
- Check of the brake levers
- Check of the Bowden cable
- Check of the screw connection of the brake levers to the push bar



- Build-up of the brake pressure (readjustment of the adjusting screw)



Wheel with aluminum brake disc

- Check of the holes (knocked out, broken bars)
- Impurities



Drum brake

- Check for general damage
- Check of the brake levers
- Check of the red locking lever
- Check of the Bowden cable
- Check of the screw connection of the brake levers to the push bar



- Build-up of the brake pressure (readjustment of the adjusting screw)
- Contamination of the brake shoes



Check of the drum brake wheel



7.18 Accessory bag

- 3 kg loadable
- Check for general damage
- Fastening points ok
- Can the bag be folded without problems

Shown here is the large bag with a load capacity of up to 8 kg.



7.19 Tie down kit

Front securing eyelets

- Check for general damage (deformation, sharp edges).
- Check of the screw connections to the frame and to the edge skid



Rear securing eyelets

- Check of the screw connections to the frame



7.20 Headrest pads

Standard

- Check for general damage (Velcro fastening, seams, holes or strapped-through areas)
- Check for impurities
- Insertion pad
- Function of the width adjustment via the pad support



Low version:

- Check for general damage (Velcro fastening, seams, holes or strapped-through areas)
- Check for impurities
- Insertion pad
- Function of the width adjustment via the pad support



7.21 Thorax pads

- Check for general damage
- Height and angle adjustment via wing nut on the rear side
- Angle adjustment of the pelotte carrier from the front



7.22 Abduction block

Functional test:

- Check for general damage
- Pivoting and latching mechanism
- Removal

Check of the screw connections:

- Bracket abduction block to the seat panel



7.23 Retainer for accessories

Necessary for use of therapy tray or grab rail

- Check for general damage
- Screw connection of the bracket to the seat base

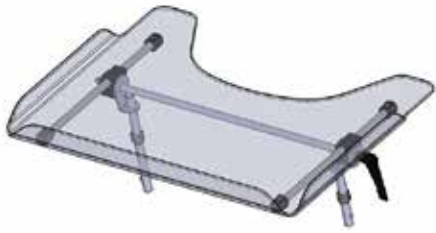


7.24 Grab rail

Functional test:

- Check for general damage
- Damage to the cover
- Check of the tripod springs and the anchoring in the retainer for accessories

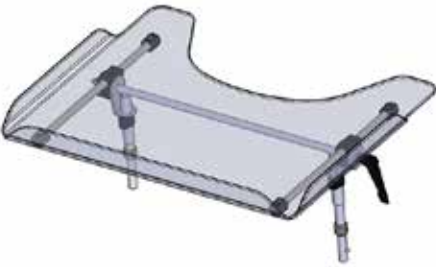
7.25 Therapy tray



Standard

Functional test:

- Check for general damage
- Damage of angle adjustment and depth adjustment
- Check of the tripod springs and the anchoring in the retainer for accessories



Height adjustable

Functional test:

- Check for general damage
- Damage of angle adjustment and depth adjustment
- Height adjustment
- Check of the tripod springs and the anchoring in the retainer for accessories



7.26 Belt fixations

Lap belt

Functional test:

- Check for general damage
- Check of the fastener
- Check of the screw connection of the bracket



4-point lap belt

Functional test:

- Check for general damage
- Check of the fastener
- Check of the screw connection of the bracket



Ankle hugger

Functional test:

- Check for general damage
- Check of the fastener
- Check of the screw connection of the bracket to the footrest



Five-point harness

Functional test:

- Check for general damage
- Check of the fastener
- Check of the screw connection of the brackets



Groin strap

Functional test:

- Check for general damage
- Check of the fastener
- Check of the screw connection of the brackets



Fixation jacket

Functional test:

- Check for general damage
- Check of the fastener
- Check of the screw connection of the brackets
- Function of the buckles on the back panel
- Rivet connection of the clamping buckles



Chest-shoulder harness

Functional test:

- Check for general damage
- Check of the fastener
- Check of the screw connection of the brackets
- Function of the buckles on the back panel
- Rivet connection of the clamping buckles



7.27 Winter warmer

Functional test:

- Check for general damage
- Zipper intact
- Damage to the real fur insert if present



7.28 Canopy

Functional test:

- Check for general damage
- Folding and unfolding of the canopy



- Removal via canopy adapter
- Checking the screw connections of the adapter to the back bar

8. DURO & DURO Cross operating life::

The expected operating life of the **DURO & DURO Cross** is 5 years, depending on the intensity of use, care as well as maintenance. We recommend an annual inspection by the authorized specialist dealer.

In case of malfunctions or defects of the wheelchair, it must be immediately handed over to the medical supply store or the specialist dealer.

9 Specifications

	DURO (Size 1 / Size. 2)	DURO Cross (Size 1 / Size 2)
Seat width	230 - 340 mm / 280 - 390 mm	230 - 340 mm / 280 - 390 mm
Seat depth	260 - 400 mm / 310 - 450 mm	260 - 450 mm / 350 - 450 mm
Seat angle	16° or 20°	16° or 20°
Back height	450 - 630 mm / 610 - 830 mm	450 - 630 mm / 610 - 830 mm
Recline	78° - 120°	78° - 120°
Knee angle	80 - 120°	80 - 120°
Lower leg length	200 - 440 mm	200 - 440 mm
Rear wheel diameter	300 x 60 mm	400 x 60 mm
Steering wheel diameter	200 x 50 mm	200 x 50 mm
Horizontal position of the axis	150 mm	200 mm
Static stability: to the front / to the rear / to the side	max. 14° / max. 24° / max. 19°	max. 14° / max. 24° / max. 19°
Minimum turning radius	1460 mm	1400 mm
User weight/ Maximum load*	75 kg	75 kg
Weight**	15,8 kg / 16,6 kg	16,4 kg / 17,2 kg
Height when folded	380 mm	400 mm
Total length Maximum Minimum	1240 mm 840 mm	1240 mm 840 mm
Total width Maximum Minimum	630 mm 620 mm	680 mm 670 mm
Height	1010 mm	1010 mm
Weight of the heaviest part (seat unit)	14,6 kg	15,4 kg



CAUTION!

*Accessories and add-ons reduce the remaining load capacity for the passenger proportionally.



CAUTION!

The weights refer to a **DURO / DURO Cross in basic configuration.

HOGGI GmbH
Eulerstraße 27 • 56235 Ransbach-Baumbach • Deutschland
Telefon: (+49) 2623 / 92 499-0
E-mail: info@hoggi.de • www.hoggi.de