
HOGGI[®]



BASIC
Manual

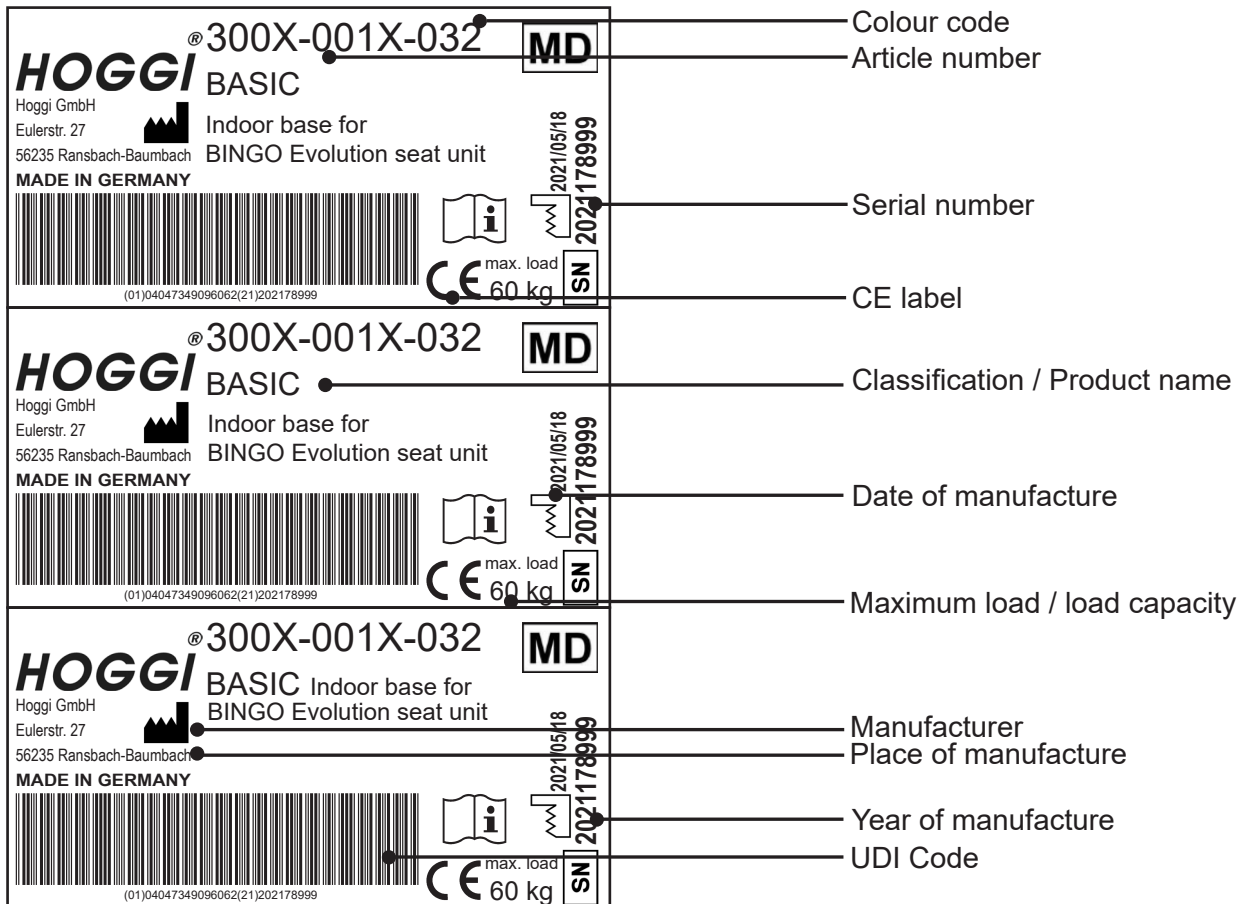
en

| | | |
|-----------|---|-----------|
| 1 | Model identification | 3 |
| 1.1 | Model identification (label) | 3 |
| 1.2 | Basic configuration | 3 |
| 1.3 | Environmental conditions | 3 |
| 2 | Common information | 4 |
| 2.1 | Preface | 4 |
| 2.2 | Application | 4 |
| 2.3 | Declaration of conformity | 4 |
| 2.4 | Terms of warranty | 5 |
| 2.5 | Service and repairs | 5 |
| 2.6 | Duty to inform serious cases | 5 |
| 2.7 | Product safety / product recalls | 5 |
| 3 | Safety Instructions | 6 |
| 3.1 | Meaning of symbols | 6 |
| 3.2 | Common safety instructions | 6 |
| 4 | Delivery and preparing for use | 9 |
| 5 | Adjusting and adaptation possibilities | 10 |
| 5.1 | Brake 125 mm castors | 10 |
| 5.2 | Brake 75 mm castors | 10 |
| 5.3 | Height adjustment | 11 |
| 5.4 | Tilt in space | 11 |
| 5.5 | Detaching & attaching the seat unit | 11 |
| 5.6 | Checking static stability before use | 12 |
| 6 | Accessories | 13 |
| 6.1 | Push handle | 13 |
| 7 | Storage | 13 |
| 8 | Maintenance / Service and Repairs and operating life | 14 |
| 9 | Recycling and disposal | 15 |
| 10 | Specifications | 15 |

1 Model identification & basic configuration

1.1 Model identification

(The **BASIC** label is placed on the base plate)



1.2 Basic configuration

- Indoor base, powder coated
- castors with 75 mm diameter, optionally castors with 125 mm diameter
- Tilt in space 0°- 32°
- Stepless height adjustment

1.3 Environmental conditions

Environmental factors such as temperature and humidity can damage the product.

The manufacturer recommends not condensing **BASIC** at ambient temperatures between -20 ° C and + 40 ° C and a humidity of 5 to 100%. Caution: Prolonged exposure to the sun may cause parts of the indoor base to become hot. Be sure to!

2 Common Information

2.1 Preface

Thank you for selecting **BASIC**. We have designed this high-quality product to make your life safer and easier, and we've included this manual to help you use and care for it. Please read the following instructions to make sure you use this product as recommended. If you have any further questions, or if you have any problems, please contact your healthcare provider.

We hope that **BASIC** meets your expectations.

We reserve technical modifications regarding the specified model in this manual. Before using the rehab pushchair the first time, this manual has to be read and understood by patient and support personnel in order to ensure a safe handling with the rehab pushchair.

2.2 Application

Rehab pushchairs, paediatric postural positioning systems or strollers are appropriate for children and adolescents who are unable to walk or who have a walking impediment and thus requiring mobility assistance. Assistance may be required due to:

- Atypical muscle tone
- Loss of limbs (dysmelia/lower limb amputation)
- Limb defect and / or deformity
- Joint contractures
- Joint defects
- General weakness

BASIC is able to be used for further service. For further service the product has to be cleaned and sanitised efficiently. Afterwards the product has to be checked concerning condition, wearout and damage by an authorised technician. All damaged and inappropriate parts need to be changed. Please see also the service manual for detailed information.

2.3 Declaration of Conformity

HOGGI GmbH as manufacturer declares under sole responsibility that the rehab-pushchair for kids and adolescents **BASIC** meets the general safety and performance requirements to Annex I of the Regulation (EU) 2017/745 of the European Parliament and of the Council. Harmonised European Standards have been applied. Applicable harmonized standards have been applied. **BASIC** meets the requirements of ISO 7176-8, DIN EN ISO 12182 and DIN EN ISO 12183.

2.4 Terms of Warranty

Warranty applies only when the product is used according to the specified conditions and for the intended purposes, following all manufacturer's recommendations. The manufacturer is not responsible for damages caused by components and spare parts not approved by the manufacturer. See also § 8 of terms and conditions on: www.hoggi.de

2.5 Service and repairs

Service and repairs of **BASIC** should only be carried out by authorized **HOGGI** dealers. Should any problems arise, please contact the dealer who supplied your **HOGGI**.

Authorized dealers only fit original **HOGGI** spare parts.

Spare parts and exchange units are available throughout the life of the product, but only a maximum of 5 years after the last product in the series was sold. **BASIC** is made for the first user according to customer requirements. Therefore, no replacement indoor base is available in the initial configuration. To ensure correct delivery of spare parts, the serial number of your product is needed. We would be happy to help you find a dealer near you. You can reach us at: info@hoggi.de

2.6 Duty to inform serious cases

All serious incidents that have occurred in connection with the product must be reported to the manufacturer, the specialist trade and the responsible authority.

2.7 Product safety / product recalls

You can find out about new information on product safety and product recalls from specialist retailers or directly from the manufacturer at www.hoggi.de



For preparing, repair and service, the following tools are required:

Allen wrench, size: 3 mm, 4 mm, 5 mm und 6 mm

Screw wrench, size: 8 mm, 10 mm, 13 mm, 17 mm, 19 mm, 24 mm



Further BASIC documentation:

- Service manual 1910-2017-EN

- Spare parts catalogue 1910-1017-EN

3 Safety instructions

3.1 Meaning of symbols

**Caution!**

Warning of possible danger of accident and injury. Warning of possible technical damage.

**Information!**

About use of product.

**Information!**

For service-personnel.

**Attention!**

Read manual before use!

3.2 Common safety instructions



Read manual completely before use!

Familiarize yourself with handling and functions of the product before use and practice the various functions. You are responsible for the safety of your child. The safety of your child could be affected if you do not follow the instructions of this manual. Nevertheless not all possible circumstances and unpredictable situations can be covered by this manual.

Reason, care and circumspection are not features of the product, they are required of persons, who use the product. The person, who is using the product and its accessories should understand all instructions and should explain them to every person using the product and its accessories. If instructions are not clear and further explanations become necessary, or if you have further questions please contact your **HOGGI** dealer.



Strap your child at all times, when they are in the wheelchair.



HOGGI points out, that any use beside the typical use can be dangerous. **BASIC** is not suitable for jogging, running, skating or similar activities. Swivelling front wheels tend to wobble at higher speed, which can cause a sudden stop and tip over of the pushchair. Use **BASIC** only at regular walking speed. Under no circumstances leave the handle bar while pushing and never push the chair away.



BASIC should only be used on solid level ground.



Use **BASIC** as intended by the manufacturer. For instance, do not drive into obstacles (including steps, curbs) without braking.



Do not go up or down stairs without the assistance of another person. If devices such as ramps or elevators are available, please use them. If they are not available, **BASIC** should be carried over the obstacle by two persons.



BASIC should only be placed on solid level ground.



The maximum incline for a properly work of the brakes is 5°.



Drive over steps with particular caution.



Before leaving **BASIC** and before getting into and out of it, always lock the wheel locks.



Please keep packaging material away from children. Plastic packaging presents the danger of suffocation.



Disposal of waste: The packaging material as far as metal, aluminium and plastic parts can be recycled. The recycling must be operated according to the national and legal terms.



Check the condition of the product if the packaging shows damages.



Never leave your child unattended in the pushchair even when it is buckled up and the brakes are engaged.



The maximum load for **BASIC** is 60 kg.
The maximum load for **BINGO Evolution** seat unit is 50 kg.



Accessories and add-ons reduce the maximum load proportionately.



We recommend that, wherever and whenever possible users transfer to the seats installed in the motor vehicle and use the corresponding vehicle restraint systems, because this is the only way to ensure optimum protection of the passengers in case of an accident.
BASIC is not admitted for use as a seat in a motor vehicle.



The assembly of a seat shell is only permitted within the specified seating area. The manufacturer of that new product combination has to test the stability and the adherence of the maximum load before commissioning.
When using the seat and back panels, always use padded seat cushions to avoid pressure points.



Be careful in case of extreme temperatures. **BASIC** can heat up significantly when in the sun or in the sauna. In extreme cold, there is a risk of hypothermia. For persons with insensitive skin (persons who can not perceive a temperature increase) and / or with skin damage, care must be taken that metal parts do not reach too high a temperature. In these cases, it is imperative to wear appropriate garments to protect the skin.



Please read to visually handicapped people the manual and info material - or use electric aids.
Please download or read all **BASIC** documents on our homepage www.hoggi.de.
In addition, product photo galleries are available online!



Make sure that your child is careful when gripping objects (those in front, to the side or behind the indoor base) not too far out of the indoor base refuses, as there is a risk of tipping or overturning due to the shift in the center of gravity.



The static stability is greater than 5 ° to the front and to the side in all settings.
Hanging bags is not permitted.



BASIC is only approved for the transport of one child.



Only use the height adjustment without a user in the seat unit.



Plastic parts and wheels are made from flame retardant materials.



Information about product safety or product recalls as well as all contact details can be found on our website at www.hoggi.de.



Whenever you change any setting, make sure that you firmly tighten any screws that have been loosened.

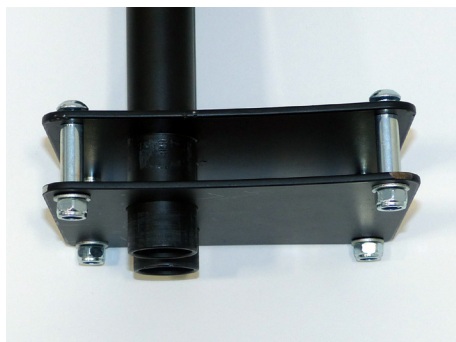
4 Delivery and Preparing for Use



The original package contains the following parts:

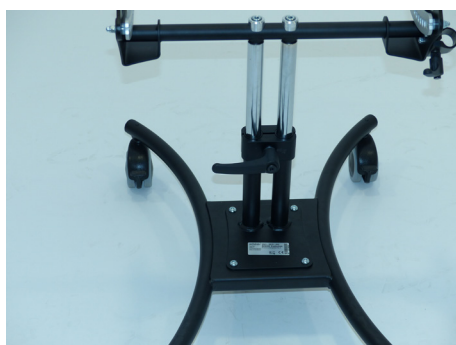
- Frame with pre-mounted castors
- Pre mounted seat adapter and pillar
- Manual
- Accessories as ordered

Please check the condition of the product if the packaging shows damages. Please remove the transport locks and the transport packaging carefully.

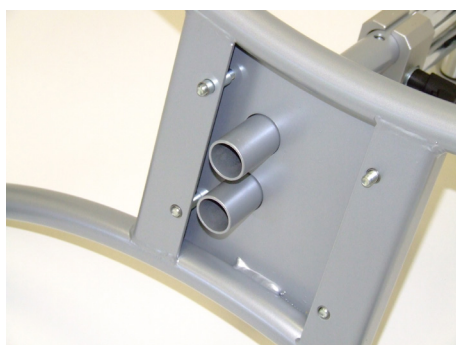


To mount BASIC please proceed as follows:

- Loosen and remove the nuts, washers, bushings and the plate.



- Insert the pillar into the frame and put the indoor base aside carefully.



- Insert the screws from above as shown.

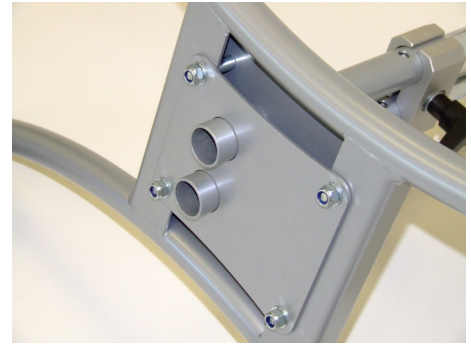


- Insert the bushings.

- Insert the plate, the washers and the nuts as shown.
- Firmly tighten the nuts.



Tighten the screw connections with a maximum of 15 Nm.



5 Adjusting and adaptation possibilities

BASIC can be equipped with 75 mm castors or with 125 mm castors.

5.1 Brake 125 mm castors

- To apply the brake, press the brake lever down with the tip of your foot.



- To open the brake, push the brake lever on the top forwards.



5.2 Brake 75 mm castors

- To apply the brake, press the brake lever down with the tip of your foot.



- To open the brake, pull the brake lever up with the tip of your foot.





5.3 Height adjustment

- Secure the seat unit with one hand.
- Release the clamping lever and move the seat unit into the desired height.
- The snap button engages at the maximum extension height.
- Tighten the clamping lever.



Caution! Risk of entrapment.
Secure the seat unit while releasing the clamping lever.
The height adjustment is only allowed without a user in the seat unit .



5.4 Tilt in space

- Activate the brake and stand beside the indoor base.
- Secure the seat unit with one hand, release the lever as shown. and move the seat unit into the desired position.
- Make sure that the locking bolts engage hearable and the (tilt) mechanism locks securely.



Caution! Check with a sharp push at the seat unit if the locking pins are located securely.



5.5 Detaching and attaching the seat unit

To transport **BASIC** in a car or to share the weight into two incidents, it is easy to detach the seat unit from the street frame. This is also of value, if you want to use **BASIC** seat unit on an (outdoor) mobility base.

- Before you detach or attach the seat unit always secure **BASIC** by activating all brakes.
- Ensure that the backrest is in the 90° position.



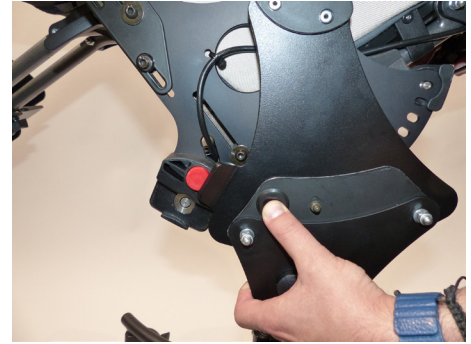
Detaching

- Stand beside the indoor base as shown.



- Release the lever and move the seat unit backwards until the stop.

- Press and hold the red release button.

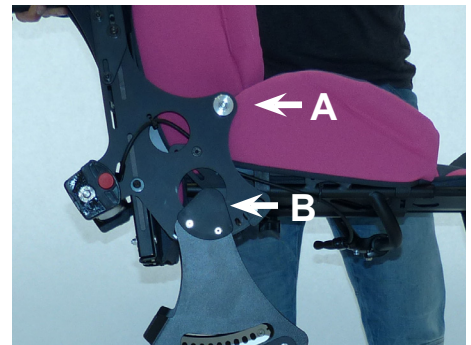


- Position the seat unit, that the seat stands vertically to the floor.
- Lift the seat unit out of the seat bearings.



Attaching:

- Grab the seat unit on the backrest and on the footrest hanger.
- Position the seat unit, that the seat stands vertically to the floor.
- Attach the seat unit on the mobility base and make sure, that the guide shaft (A) slides into the (tilt) bracket (B) on both sides.
- Swing the seat unit until the locking pins engage hearable in the (tilt) mechanism (in the 30° position).
- Choose the desired position.



Check by pulling the seat sharply forward that the seat unit is properly engaged. Check that the locking pins are completely engaged. Push in completely, if necessary.



5.6 Checking static stability before use

All combinations of the **BASIC** indoor base with other seat shells and seating systems must be checked for static stability by the specialist supplier before commissioning.

BASIC combined with an external seating system and child may not tip over an an angle of 5°. The test must be carried out in all directions.



Caution!
Only carry out the static stability test with the help of another person.





6 Accessories

All accessories not installed by the manufacturer must be installed by trained technicians. The following notes on installation are for your information but should be performed by trained technicians.

6.1 Push handle

For an easy and comfortable moving the indoor base.



After releasing the lever on the clamping unit, the angle of the push handle can be adjusted.

It is necessary to turn the push handle away before removing seating systems with long backrests. .

To remove the push handle, open the clamping unit, press the snap button and pull the push handle out of the clamping unit.

Proceed in reverse order to attach the push handle.



7 Storage

BASIC can be stored in one piece.



Care instructions!
Clean **BASIC** before storage.
Please see the care instructions on page 14.



There is also the option of minimizing **BASIC** into a smaller package in a few simple steps.

You can achieve the smallest pack size by removing the seat unit and the push handle.

8 Maintenance / Service and Repairs / Operating life

Your **BASIC** is CE approved. The manufacturer herewith guarantees that this medical product as a whole conforms to the basic safety and performance requirements in accordance with Annex I to Regulation (EU) 2017/745 of the EU Parliament and of the Council. **BASIC** should be checked for correct function before every use. Nuts with self-assurance should only be used once. After repeated loosening nuts must be replaced. The items listed in the following table must be checked by the user at the indicated intervals.

| Check | daily | weekly | monthly |
|---|-------|--------|---------|
| Function test brake/wheel lock | X | | |
| Function test seat height adjustment | X | | |
| Check screw connections | | X | |
| Visual inspection wearing parts such as wheels and bearings | | | X |
| Contamination on bearings | | | X |
| Function test tilt mechanism | | | X |

Should any defects become obvious, please contact your authorized **HOGGI** dealer to eliminate them. We also recommend that you have your **BASIC** serviced by your authorized dealer every twelve months.

Operating life:

The expected operating life of the **BASIC** indoor base is 6 years, depending on intensity of use and maintenance. We recommend an annual inspection by an authorized **HOGGI** dealer. In case of an interference or a damage of the indoor base it has to be checked immediately by a dealer or a medical supply store.



Instructions for cleaning and maintenance

- Clean all frame components and plastic parts using mild detergents only. (e.g. Sagrotan)
- Padding parts can be washed at 40 °C. If washed in a washing machine, put them in a linen bag or a pillow case.
- In most cases, wiping with a damp cloth is sufficient
- Do not use **BASIC** in salt water.
- Keep sand or other particles from damaging the wheel bearings
- If **BASIC** gets wet, towel-dry it as soon as possible.
- Hair and dirt particles generally accumulate between the caster wheel and fork. This can restrict the caster wheels from rotating smoothly. Remove the caster and thoroughly clean the fork and caster using a mild detergent.
- Screw connections should be checked frequently, in particular when beginning to use the indoor base and after any adjustment. If a screw connection becomes loose repeatedly, consult your dealer.

9 Recycling and disposal

BASIC is made from recyclable materials.

The product packaging as well as all metal, aluminum and plastic parts can be recycled.
Disposal must be carried out in accordance with the respective national, statutory regulations.
Please ask the city / municipal administration for local ones waste disposal company.

10 Specifications

| | | |
|-----------------------------|--------------|--------------|
| Wheel diameter | 75 mm | 125 mm |
| Seat height MINI | 510 - 685 mm | 580 - 755 mm |
| Seatheight size 1+2 | 470 - 645 mm | 540 - 715 mm |
| Weight | 9,4 kg | 10,9 kg |
| Indoor base (heaviest part) | 6,35 kg | 7,87 kg |
| Seat angle | 0° bis + 32° | |
| Turning radius | 870 mm | |
| Maximum load capacity | 60 kg | |
| Overall length | 730 mm | |
| Overall width | 540 mm | |
| (Lowest) total height | 600 mm | 670 mm |



CAUTION!

The seat height depends on the wheel diameter.



CAUTION!

Accessories and add-ons reduce the remaining load capacity for the passenger proportionally.



CAUTION!

The weights refer to a **BASIC** in basic configuration including seat adapter in size 2.

HOGGI GmbH
Eulerstraße 27 • 56235 Ransbach-Baumbach • Deutschland
Telefon: (+49) 2623 / 92 499-0 • Telefax: (+49) 2623 / 92 499-99
E-mail: info@hoggi.de • www.hoggi.de