
HOGGI[®]



CE

SHARKY Service instructions

EN

Service instructions for toilet wheelchair SHARKY

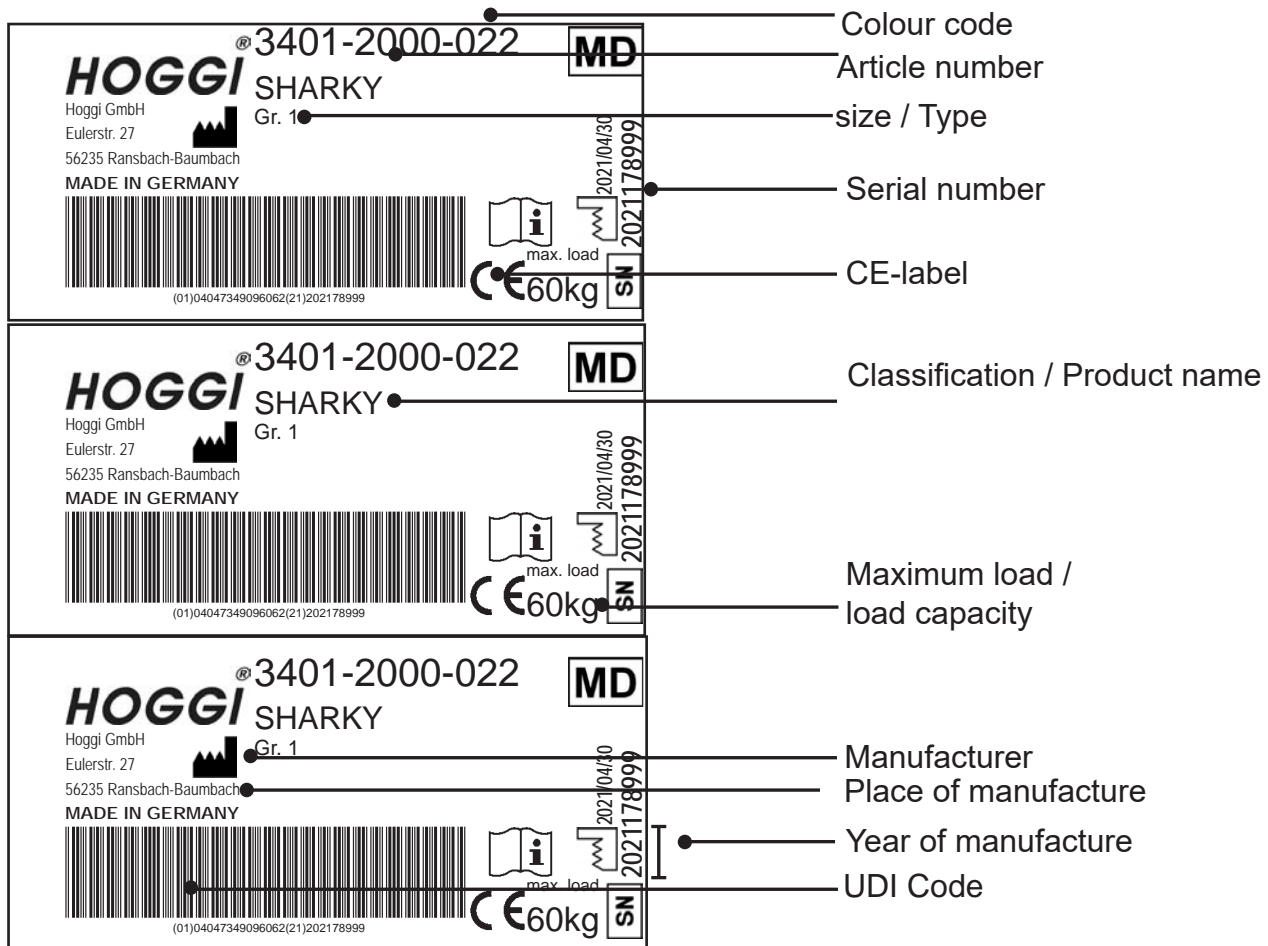
1	Model identification & basic configuration	
1.1	Model identification (label)	4
1.2	Basic configuration	4
2	Overview SHARKY	
2.	Overview	5
3	Common information	
3.1	Preface	6
3.2	Material information	7
3.3	Application	7
3.4	Declaration of conformity	7
3.5	Terms of warranty	7
3.6	Service and repairs	8
3.7	customer services	8
3.8	Packing and shipping instructions	8
4	Safety instructions	
4.1	Meaning of symbols	9
4.2	Common safety instructions	9
5	Required tools and maintenance schedule	
5.1	Required tools	10
5.2	Maintenance schedule	11-12
6	Seat settings	
6.1	Seat height	13
6.2	Tilt in space	13
6.3	Seat depth	14
6.4	Seat width	15-16
6.5	Back angle adjustment	16-17
6.6	Detachable foot rest hanger	17
6.7	Foot rest system	18-20
6.8	Folding with seat unit	20-21
6.9	Detaching seat unit	21-23
6.10	Detachable arm rest with height adjustment	23
7	Maintenance schedule	
7.1	Seat unit	24
7.2	Back unit	25
7.3	PU-side pads	25
7.4	Shower- and Toilet base	25-27
7.5	wheels	27
7.6	pushbar	27
7.7	Foot rest system	28
7.8	head rest system	29
7.9	Lateral pads	29
7.10	Belt systems	30

7.11	Arm rests	31
7.12	Therapy table	31
7.13	Abduktion block	32
7.14	Toilet bucket	32
7.15	Bathtub subframe	33
7.16	Toiletadapter	33
8	Exchange of wearing parts	
8.1	wheels	34
8.2	Seat- and back pads	34
9	Operating life	
9.	SHARKY operating life	35
10	Specifications	
10.	SHARKY Specifications	35

1 Model identification

1.1 Model identification (label)

The **SHARKY** label is mounted on the bottom right frame of the mobility base



1.2 Basic configuration

Mobility base

- compact foldable
- height adjustable, override toilet height 43-53 cm
- Tilt in space (seat angle) -10° bis 45°

Seat unit

- detachable (quick release)
 - PU-pads back, seat and hip support
 - closable hygiene insert
 - back angle adjustable, foldable and detachable
- size 1:
- seat width 24, 27, 30 cm
 - seat depth 27-36 cm
 - back height 42 cm
 - back rest angle 72-120°
 - max. load: 60 kg
- size 2 in planning

2 SHARKY Overview



1. Back unit
2. Seat unit
3. Mobility base
4. Foot rest system
5. wheels

3 Common Information

3.1 Preface

Thank you for selecting the **SHARKY** toilet wheelchair. We have designed this high-quality product to make your life safer and easier, and we've included this manual to help you use and care for it.

Please read the following instructions to make sure you use this product as recommended. If you have any further questions, or if you have any problems, please contact your healthcare provider.

We hope that **SHARKY** meets your expectations.

We reserve technical modifications regarding the specified model in this manual. Before using the rehab pushchair the first time, this manual has to be read and understood by patient and support personnel in order to ensure a safe handling with the rehab pushchair.

Regular maintenance is important - it increases safety and prolongs the life of the product. Every rehab product should be checked and serviced once a year.

However, it is recommended to check, readjust and, if necessary, service products with a high frequency of use, with users in growth or users with a changing clinical picture at 6-month intervals.

Only original spare parts should be used for all service and maintenance work.

The service and maintenance work described here should only be carried out by trained specialist personnel and not by the user of the aid.

These service and maintenance instructions refer to the respective spare parts catalogs and operating instructions of the products described. Please use all documents together.

Use the maintenance schedule (Chapter 5.2, Checklist to tick off) as a copy template.

Retain completed maintenance schedules and provide a copy to the customer.

SHARKY	instruction manual	1910-0050-EN
SHARKY	Spare parts catalogue	1910-1050-EN

3.2 Material information

The standard and production parts used in **SHARKY** (screws, nuts, washers, bolts, etc.) are made of stainless steel. Underframes and other frame construction are made of powder-coated aluminum and stainless steel.

Seat and back surfaces, as well as side panel cover and grid handles are injection molded from a plastic material. Corresponding upholstery parts are made of flame retardant, waterproof polyurethane foam.

Neoprene is additionally used for the strapping systems.

3.3 Application

SHARKY toilet wheelchair for children is used for indoor and daily use in the wet area. It serves children and adolescents with a deficit in sitting and standing up for individual use in daily care/hygiene or toilet training.

Different bases ensure a variety of uses such as use as a commode chair, commode attachment, bathtub insert or mobile positioning option for daily personal hygiene.

Assistance may be required due to:

- Atypical muscle tone
- Loss of limbs (dysmelia/lower limb amputation)
- Limb defect and / or deformity
- There are no known contraindications when used as intended
- Joint contractures
- Joint defects
- General weakness

The **SHARKY** toilet wheelchair is able to be used indoor as well as for further service. For further service the product has to be cleaned and sanitised efficiently. Afterwards the product has to be checked concerning condition, wearout and damage by an authorised technician. All damaged and inappropriate parts need to be changed.

Please see also the service manual for detailed information.

3.4 Declaration of conformity

HOGGI GmbH as manufacturer declares under sole responsibility that the rehab-push-chair for kids and adolescents

SHARKY meets the general safety and performance requirements to Annex I of the Regulation (EU) 2017/745 of the European Parliament and of the Council. Harmonised European Standards have been applied. Applicable harmonized standards have been applied. **SHARKY** meets the requirements of ISO 7176-8, DIN EN ISO 12182 and DIN EN ISO 12183.

3.5 Terms of warranty

Warranty applies only when the product is used according to the specified conditions and for the intended purposes, following all manufacturer's recommendations. The manufacturer is not responsible for damages caused by components and spare parts not approved by the manufacturer. See also § 8 of terms and conditions on: **www.hoggi.de**

3.6 Service and repairs

Service and repairs on the **SHARKY** toilet wheelchair may only be carried out by your specialist dealer. In case of problems, contact your responsible specialist dealer. In case of repairs, you will only receive original spare parts there. Spare parts and replacement units are available during the entire service life of the product, but only for a maximum of 2 years after the sale of the last product in this series.

The toilet wheelchair is custom made for the first time user. Therefore, no replacement wheelchair is available in the initial configuration. In order to ensure a correct spare parts delivery the serial no. of your toilet wheelchair is required.

We are happy to help you find a dealer close to you.

You can reach us at: **info@hoggi.de**

3.7 Customer service

Our customer service will be happy to answer any technical questions you may have.

Please refer to the last page for contact addresses and telephone numbers.

3.8 Packing and shipping instructions

If **SHARKY** has to be sent back to the manufacturer for repair or exchange, the product must be thoroughly cleaned/disinfected beforehand and put in a hygienically safe condition.

Packaging is done by wrapping the product in a clean film, ideally with air cushions and the subsequent use of a sufficiently large cardboard box, so that no transport damage can occur.

4 Safety instructions

4.1 Meaning of symbols



Caution!
Warning of possible danger of accident and injury. Warning of possible technical damage.



Information!
About use of product.



Information!
For service-personnel.



Attention!
Read manual before use!

4.2 Common safety instructions

For all maintenance and repair work, you should generally observe a few points:



Attention!
Familiarize yourself with the functions of the product. If you are not familiar with the product, study the user manual before testing. If no user manuals are available, request them from us. You can also download documents from our homepage at: www.hoggi.de



Attention!
Study the service and maintenance instructions before starting work.



Attention!
Use suitable tools (see page 4 ff.).



Attention!
Wear suitable clothing and, if necessary, gloves and protective goggles.



Attention!
Secure the product from tipping over or falling down, e.g. from the workbench.



Attention!
Clean / disinfect the product before starting the test. If necessary, observe the instructions in the user manual and product-specific test instructions.



Note!
Screws and nuts with thread locking are used for a large number of screw connections. If you have to open such screw connections, replace the respective nut or screw with one with new thread locking. If new nuts or bolts with thread locking are not available, use liquid thread locking compound with medium strength (e.g. Loctite 241 or Euro Lock A24.20).

5 Required tools and maintenance schedule

5.1 Required tools

The following list shows the tools and utilities required for service.



Reversible ratchet and sockets
size 8-24



Torque wrench
Measuring ranges 5-50 Nm



Wrench
Size 6 - 24



Hexagon wrench
Gr. 3 - 6



Screwdriver
Blade width 2.5 3.5 and 5.5



Phillips screwdriver
Size 2



Plastic hammer



Hammer approx. 300 g



Carpet knife with sickle and
standard blade



Side cutter



Liquid thread locking
„medium strength



Riveting pliers for rivets up to
5 mm

5.2 Checklist Maintenance schedule

Maintenance schedule		SHARKY Toilet wheelchair		Customer:	
Pos.	Area	Check (Checklist to tick off <input checked="" type="checkbox"/>)			
	Serial number:	1.) Function / setting (like manual)	2.) none damage / deformation	3.) Screw connections	
1. Basic product					
1.1	Seat unit	- Seat adjustments	<input type="checkbox"/>		<input type="checkbox"/>
		- Detaching/Attaching/Locking	<input type="checkbox"/>	<input type="checkbox"/>	<input type="checkbox"/>
		- Pads (Fixation / Hygiene)	<input type="checkbox"/>	<input type="checkbox"/>	
1.2	Back unit	- Back rest adjustment	<input type="checkbox"/>	<input type="checkbox"/>	<input type="checkbox"/>
		- Detachable back	<input type="checkbox"/>	<input type="checkbox"/>	<input type="checkbox"/>
		- Pads (Fixation / Hygiene)	<input type="checkbox"/>	<input type="checkbox"/>	<input type="checkbox"/>
1.3	PU-side pads	- Seat width	<input type="checkbox"/>	<input type="checkbox"/>	
		- Hygiene	<input type="checkbox"/>		
1.4	Mobility base	- Height adjustment	<input type="checkbox"/>	<input type="checkbox"/>	<input type="checkbox"/>
		- tilting unit	<input type="checkbox"/>	<input type="checkbox"/>	<input type="checkbox"/>
		- Foldable	<input type="checkbox"/>	<input type="checkbox"/>	<input type="checkbox"/>
1.5	Wheels	- Brakes	<input type="checkbox"/>	<input type="checkbox"/>	<input type="checkbox"/>
		- Swivelling	<input type="checkbox"/>	<input type="checkbox"/>	
		- Running	<input type="checkbox"/>	<input type="checkbox"/>	
Notes:					

		1.) Function / setting (like manual)	2.) none damage / deformation	3.) Screw connections
2. Accessories				
2.1	Pushbar	- Wearing off - Fixation	<input type="checkbox"/> <input type="checkbox"/>	<input type="checkbox"/> <input type="checkbox"/> <input type="checkbox"/>
2.2	Foot rest system	- Angle adjustment - Detaching / Attaching - Foot board angle- / Height adjustment	<input type="checkbox"/> <input type="checkbox"/> <input type="checkbox"/>	<input type="checkbox"/> <input type="checkbox"/> <input type="checkbox"/>
2.3	Head rest system	- Height adjustment - Angle adjustment - Pads	<input type="checkbox"/> <input type="checkbox"/> <input type="checkbox"/>	<input type="checkbox"/> <input type="checkbox"/> <input type="checkbox"/>
2.4	Thoraxpelotten	- Pads - Mechanism (swing / height adjustment)	<input type="checkbox"/> <input type="checkbox"/>	<input type="checkbox"/> <input type="checkbox"/>
2.5	Belt systems lap belt, Breast-shoulder harness, Pelvic retraction belt, Anklehuggers, Calf support	- Buckles - Hygiene	<input type="checkbox"/> <input type="checkbox"/>	<input type="checkbox"/> <input type="checkbox"/>
2.6	Arm rests	- Height adjustment - Pads - Hygiene	<input type="checkbox"/> <input type="checkbox"/> <input type="checkbox"/>	<input type="checkbox"/> <input type="checkbox"/> <input type="checkbox"/>
2.7	Therapy table	- Clamping	<input type="checkbox"/>	<input type="checkbox"/> <input type="checkbox"/>
2.8	Abduktion block & Splash guard	- Fixation - Pads - Hygiene	<input type="checkbox"/> <input type="checkbox"/> <input type="checkbox"/>	<input type="checkbox"/> <input type="checkbox"/> <input type="checkbox"/>
2.9	Toilet bucket	- Fixation - Bucket - Hygiene	<input type="checkbox"/> <input type="checkbox"/> <input type="checkbox"/>	<input type="checkbox"/> <input type="checkbox"/> <input type="checkbox"/>
2.10	Bath subframe	- Suction cups - Fixation	<input type="checkbox"/> <input type="checkbox"/>	<input type="checkbox"/> <input type="checkbox"/> <input type="checkbox"/>
2.11	Toilet adapter	- Fixation	<input type="checkbox"/>	<input type="checkbox"/> <input type="checkbox"/>
	Do the settings on the base frame meet the user's requirements?		<input type="checkbox"/>	
Notes:				
Maintenance was performed by: on:				



6. Seat adjustments

6.1 Seat height

The seat height of SHARKY is adjusted by means of the engaging lever on the telescopic tubes. By sliding the tube up and down on the support strut, an adjustment range of 43-52 cm is achieved in 4 steps.

The height adjustment must not be operated during use with the child!



Seat height:
high



Seat height:
low



6.2 Tilt in space

SHARKY offers tilt in space from -10° to $+45^{\circ}$.
12 positions of approx. 4.5° each can be individually adjusted.



Tilt is engaged by a locking bolt cable on the rear side.
SHARKY offers seat angle adjustment from -10° to $+45^{\circ}$.



TIS
Minimum -10°



TIS:
Maximum
+45°



6.3 Seat depth

The seat depth of SHARKY is adjusted by loosening the 4 marked screw connections under the seat surface. The adjustment range is 27-37 cm.



The M6 nuts are loosened briefly with a suitable socket or wrench.



The seat plate can now be moved forward or backward.

Tighten the screws again and make sure that the seat plate can no longer be moved!



6.4 Seat width

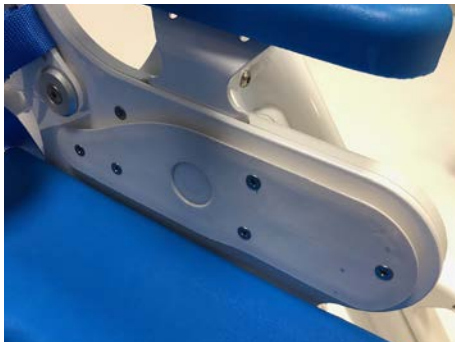
The seat width of SHARKY is changed by replacing the side pads. There are 3 different sizes. Thus, the following seat widths can be realized with the different seat unit sizes:

Size 1: 24, 27, 30 cm

Size 2: 29, 32, 35 cm



The side pads can be easily removed from the holder.



To attach another pad, pull it over the edge of the retaining plate by sliding it on from the front.



Seat width 30 cm



Seat width 27 cm



Seat width 24 cm



6.5 Back angle adjustment

SHARKY offers back angle adjustment from 72° to 120°. 8 positions of approx. 6° each can be individually adjusted



The angle adjustment is triggered by a locking bolt cable on the rear side.



For a small folding size, the back can be folded down completely.



Minimum angle ~ 72°



Maximum angle ~ 120°

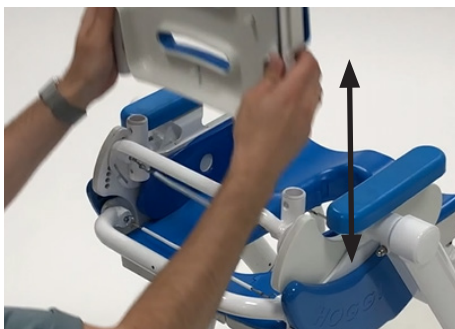


6.6 Detachable back

Via the two snap buttons on the rear side, the back unit can be removed.



Press in the pins with your thumbs.



Remove the back unit upwards from the holder.

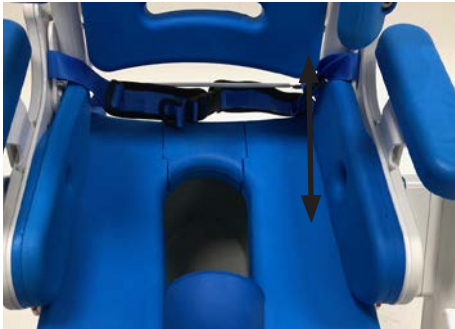
To reinsert the back unit, simply push it back into the holder and let it snap into place.



6.7 Footrest system

Lower leg height:

The lower leg length is adjusted by loosening the wing screws on the footrest bearing and then moving the footrest vertically on the frame.



Adjustment for large lower leg lengths.



Loosen the wing nut.



Adjustment for short lower leg lengths.



Footrest angle

- The footboard angle can be adjusted by loosening the screw connection and moving it in the slotted hole of the bracket between 80° and 100°.
- The footboard can be swivelled upwards with the help of a locking bolt under the footboard.



Footrest hanger

The knee angle can be adjusted between 78° and 138° via a locking bolt under the front edge of the seat plate.

Strongly angled



Medium setting



Straight angle



Removing and attaching the footrest

The smallest knee angle must not be preset for removing and attaching the footrest!

It is recommended to tilt the seat to 45° beforehand!

Tighten the two heads of the tension catches with your index fingers. Secure the footrest to the bars with your hands.



Push the footrest towards the rear so that the holder comes out of the slots.



Remove footrest

To hook in, insert the footrest back into the slots.



Make sure that the eyelets are hooked behind the locking shafts of the seat frame.



Finally, swing the footrest forwards again until you hear the catches click into place.



6.8 Folding with seat unit

SHARKY can also be folded easily with the seat unit integrated.

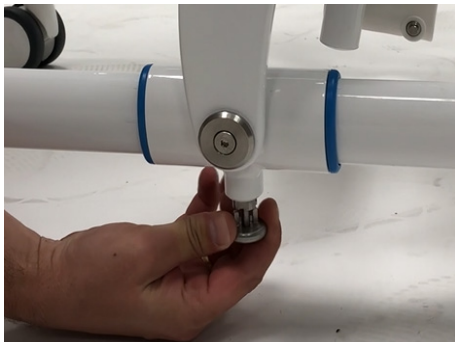
The folding process should not be carried out in the lowest seat position, as this can lead to collisions and damage to the mobility base.



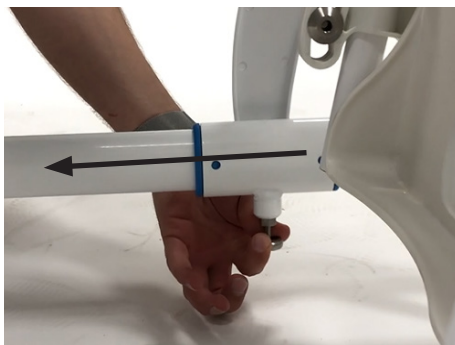
First swing up the footrest.



Fold the seat unit negatively and either fold in or remove the back section.



Pull out the right-hand lower pull catch and turn it 90°, so that the lock is activated.



Pull out the pull catch on the left-hand side and let the sliders slowly slide backwards until the rear catch point in the frame is reached and the pull snaps engage there.

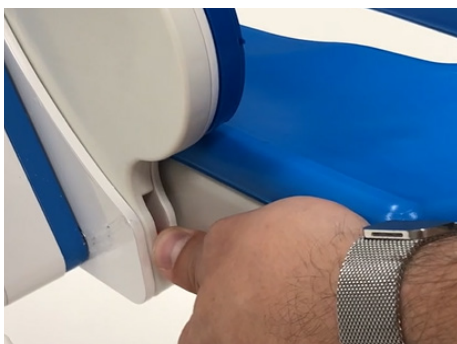


6.9 Removing the seat unit

with use of the bath base or the toilet adapter



The seat unit is secured with the orange catch hooks on the left and right of the respective mobility base.



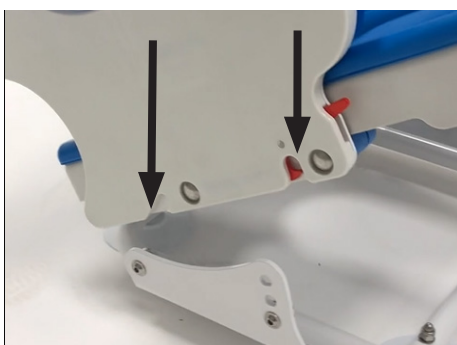
To remove the seat unit, press down the catch hooks on both sides with your thumbs. Hold the seat unit with your hands.



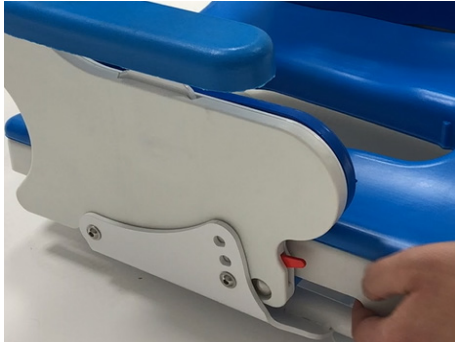
First lift the seat unit at the front and tilt it.



Then lift completely off the retaining shafts and remove the seat unit.



To place on a mobility base, slightly tilt the seat unit and put it with the rear guide slots onto the locking shafts of the of the holder.



Place the seat unit on the front locking shafts and finally lock it in place.



6.10 Removable armrests and height adjustment

Armrests can be adjusted in the range from 14.5 cm to 20.5 cm and can also be removed.

Lowest position (14.5 cm)



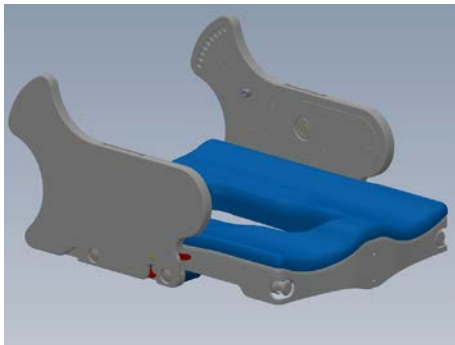
Highest position (20.5 cm)



Armrest removed



Internal push button for height adjustment and removal.



7. Maintenance schedule

7.1 Seat unit

Functional test:

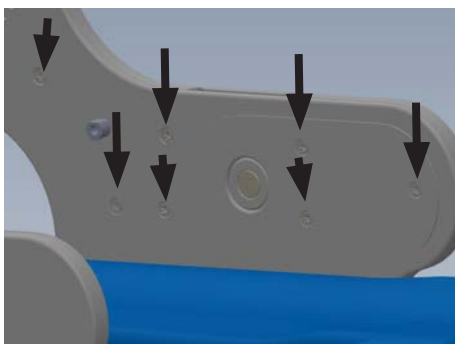
- Check for general damage
- Checking the seat depth adjustment
- Checking the seat cushion for good grip and cleanliness on the underside



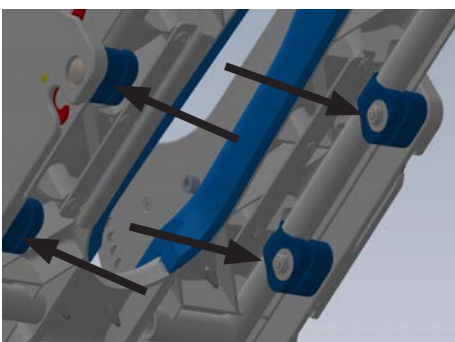
- Checking the left and right catch hooks. Can the seat be removed and replaced easily?



- Inner structure of the seat plate cover with mechanics of the release unit



- Side screw fittings for attaching the side pad holder



Checking the screw connections:

- 4 carriage bolts on the underside of the seat to adjust the seat depth and hold the seat in place.



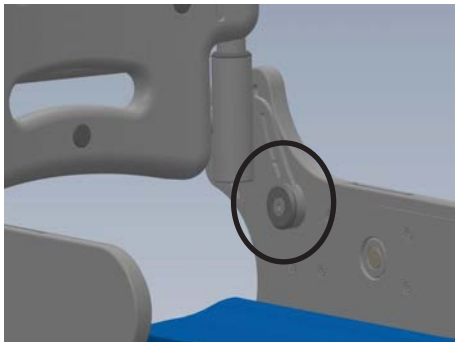
7.2 Back unit

Functional test:

- Check for general damage
- Checking the back padding for good grip and cleanliness on the back side



- Checking the locking bolt for the backrest angle adjustment
- Remove and reattach the backrest



Checking the screw connections:

- Screw connections of the back base to the side panels



7.3 PU side pads

Functional test:

- Check for general damage
- Checking the cleanliness on the holder and on the back of the cushion



7.4 Shower- and Toilet base

Functional test:

- Check for general damage
- Height adjustment via the function of the latching handles
- Foldability via the function of the glides
- Tilt in space



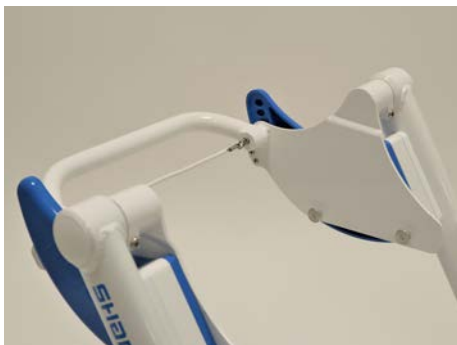
- Can the ratchet handle be lifted with sufficient spring pressure?
- Does the telescopic tube glide well over the support and does the locking mechanism lock neatly into place at all appropriate points?



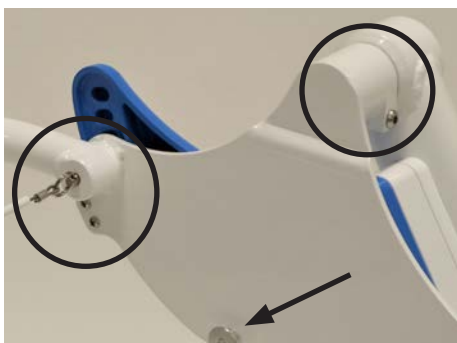
- Does the latching function of the right-hand tension catch work?
- Does the slider move cleanly backwards and lock into place at the rear latch position?



- Does the glider move cleanly forwards?
- Do the bolts of the tension catches engage audibly in the frame?



- Checking the pin pull system
- Can all levels be adjusted and do the bolts engage neatly?

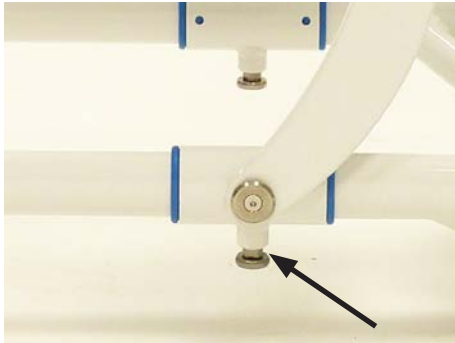


Checking the screw connections:

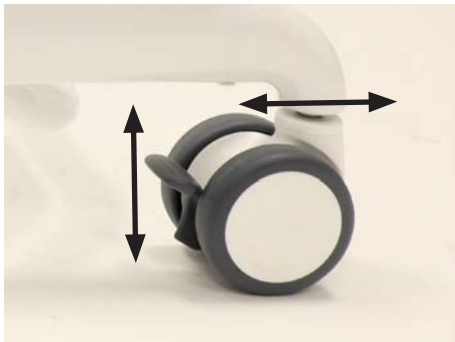
- Securing the tilt unit
- Tight fit of the tilt guide
- Screw connection of the 4 locking shafts



- Screw connections on the ratchet handles
- Screw connections at the upper and lower end of the support lever
- Screw connections of the support struts to the frame



- Secure hold of the tension catches in the thread of the gliders
- Screw connections of the tension catch heads (the thread of the tension catch is secured with Loctide medium-strength, the heads with high strength)



7.5 Wheels

Functional test:

- Check for general damage
- Braking behaviour of the parking brakes
- Function of the directional locking device (do the wheels remain in position when actuation))
- Swivelling and running behaviour of the wheels



Check the screw connections:

- Tight fit of the wheels in the threads of the frame construction



7.6 Push bar

Functional test:

- Check for general damage
- Firm hold of the rubber grip caps

Checking the screw connections:

- Screw connection of the headrest to the backrest frame and if necessary to the console of the headrest



7.7 Footrest system

Functional test:

- Check for general damage
- Removing and inserting the footrest
- Height adjustment of the footrest
- Angle adjustment of the knee angle and the footrest using locking pin hoists



Bolt pull for knee angle adjustment



Bolt pull for footrest angle adjustment



Checking the screw connections:

- Wing screw for height adjustment of the footrest holder
- Firm fit of the locking pin for engaging the footrest



- Screw connection of the crossbar



7.8 Headrest

Functional test:

- Check for general damage
- Removing and inserting the headrest



Checking the screw connections:

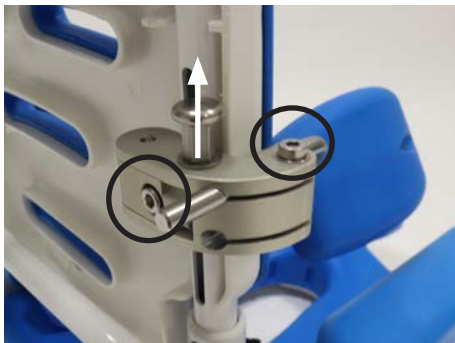
- Clamping lever for height, angle and depth adjustment
- Screw connections for fastening the cushion
- Screw connections on the console



7.9 Thorax pads

Functional test:

- Check for general damage
- Swivel mechanism
- Angle adjustment



Front pad engaged

Check the screw connections:

- Pad holder to the clamp in the back frame tube
- Clamping screw to hold the pelotte pad
- Front inner screw for adjusting the angle



Pad open to the back



7.10 Belt fixations

Lap belt

Functional test:

- Check for general damage
- Check of the fastener



Chest-shoulder harness

Functional test:

- Check for general damage
- Check of the fastener



A2J pelvic retraction belt

Functional test:

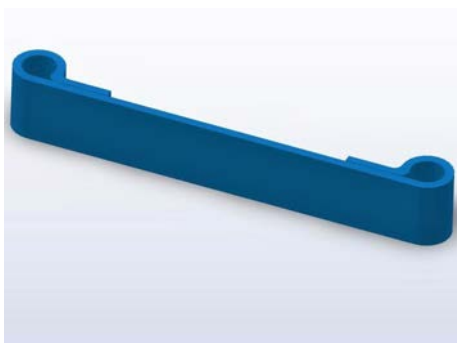
- Check for general damage
- Check of the fastener



Ankle hugger

Functional test:

- Check for general damage
- Check of the fastener



Calf strap

Functional test:

- Check for general damage



7.11 Armrests

Functional test:

- Check for general damage
- Height adjustment via push button
- Removal and installation
- Cleanliness on the underside of the cushion

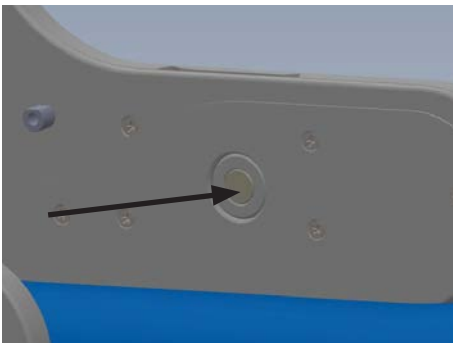
Armrest low



Armrest high



Armrest removed



Push button for height adjustment and removal of the armrest.



7.12 Therapy tray

Functional test:

- Check for general damage
- Removing and fitting the support surface

Checking the screw connections:

- Bracket under the armrest



7.13 Abduction block and splash guard

Functional test:

- Check for general damage
- Removal and engagement of the block
- Hygiene



Checking the screw connections:

- Fastening of the locking hook to the seat surface
- Function of the locking hook



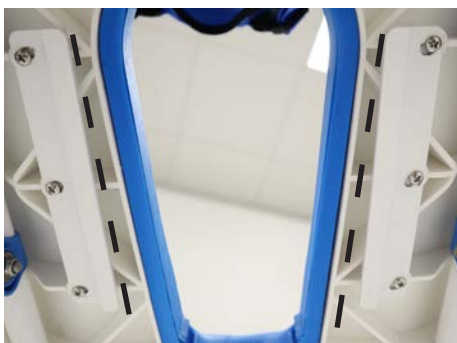
- Checking cleanliness/hygiene after removing the splash guard



7.14 Toilet bucket

Functional test:

- Check for general damage
- Insertion and removal of the bucket
- Good hold of the bucket even in tilted position
- Hygiene



Check the screw connections:

- Screw connections of the insertion strips, slightly tapered



7.15 Bathtub subframe

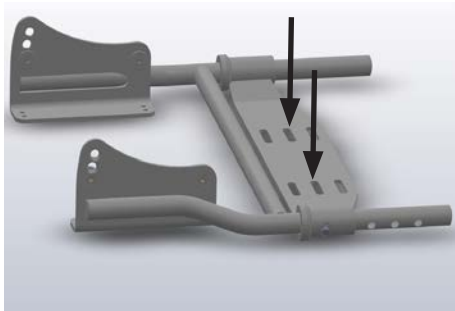
Functional test:

- Check for general damage
- Does the seat unit lock into place well?
- Firm hold of the suction cups in the tub



Check of the screw connections:

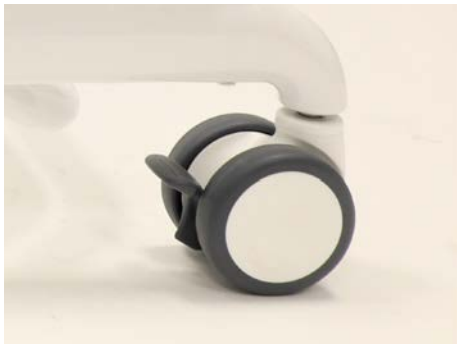
- Screw connection of the respective suction cups
- Tight fit of the locking shafts on the frame



7.16 Toiletheadapter

Functional test:

- Check for general damage
- Does the seat unit lock into place well?
- Depth adjustment
- Firm seat of the adapter on the toilet
- Tight fit of the locking shafts



8. Exchange of wearing parts

8.1 Wheels

In the event of a defect or wear, the wheels must be replaced.



To do this, loosen the screw connection with a 13 mm spanner and turn the wheel off.

Tighten the new wheel in reverse order.

Secure the screw connection with the appropriate washer and spring washer.



8.2 Seat- and back pads

In the event of a defect or wear, the upholstery parts must be replaced. This includes the back and seat cushions. These are simply removed from the back or seat surface and replaced.



To remove the side pads, they can simply be pulled off the side contour and replaced.



Replacements of the side pads are available in three seat width sizes

9. SHARKY operating life:

The expected operating life of the **SHARKY** is 5 years, depending on the intensity of use, care as well as maintenance. We recommend an annual inspection by the authorized specialist dealer.

In case of malfunctions or defects of the toilet wheelchair, it must be immediately handed over to the medical supply store or the specialist dealer.

10. Specifications

	Size 1	Size 2
Seat width	24/27/30	29/32/35
Seat depth	27 - 36 cm	27 - 40 cm
Back height	45 cm	55 cm
Maximum traversable toilet height	53 cm	53 cm
Seat angle	-10° - 45°	-10° - 45°
Recline	72° - 120°	72° - 120°
Footrest angle	80° - 100°	80° - 100°
Knee angle	78° - 138°	78° - 138°
Armrest height	14,5 - 20,5 cm	14,5 - 20,5 cm
Steering wheel diameter	75 mm, 100 mm	75 mm, 100 mm
User weight*/ Maximum load	60 kg	60 kg
Weight (Seat)**	9 kg	10 kg

**ATTENTION!**

*Accessories and add-on parts reduce the remaining load capacity for the occupant.

**ATTENTION!**

** The weight specifications refer to a **SHARKY** seat unit in basic equipment and maximum seat width.

HOGGI GmbH
Eulerstraße 27 • 56235 Ransbach-Baumbach • Deutschland
Telefon: (+49) 2623 / 92 499-0 • Telefax: (+49) 2623 / 92 499-99
E-mail: info@hoggi.de • www.hoggi.de