
HOGGI[®]



CLEO Teen User manual

en

1	Model identification & basic configuration	4
1.1	Model identification (label)	4
1.2	Basic configuration	5
1.3	Environmental conditions	5
2	Common information	6
2.1	Preface	6
2.2	Application	6
2.3	Declaration of conformity	6
2.4	Terms of warranty	7
2.5	Servicing and repairs	7
2.6	Duty to inform serious cases	7
2.7	Product safety / product recalls	7
3	Safety instructions	8
3.1	Meaning of symbols	8-11
3.2	Common safety instructions	8-11
4	Delivery and preparing for use	12
5	Adjusting and adaptation possibilities	18
5.1	Brake <i>HOGGI</i> light	18
5.2	Brake (including fender)	18
5.3	Seat width	19
5.4	Seat height, seat depth, seat angle	19
5.5	Back height	20
5.6	Back angle	20
5.7	Active degree	20
5.8	Height adjustment of the one hand push handle	21
5.9	Height adjustment of the push-bar	21
5.10	Height and angle adjustmen of the push handles	22
5.11	Anti-tip	22
5.12	Detaching wheels with quick-release axles	23
5.13	Pneumatic tyres / PU-tyres	23
5.14	Push-rims	24
5.15	Drum brake	24
6	Accessories	25
6.1	Seat panel	25
6.2	Backrest panel	26
6.3	Footrest hanger (90°)	26
6.4	Footrest depth / Footrest angle	26
6.5	Footrest bracket with interlocking	26
6.6	ABS-foot-plate, flat	27
6.7	ABS-foot-plate, with heel stop	27
6.8	Aluminium footrest, flat	27
6.9	Lower leg length	27

6.10	Seat cushion	27
6.11	Contoured seat cushion	28
6.12	Back cushion	28
6.13	Spoke guard	28
6.14	Headrest „standard“ with upholstery	28
6.15	Armrests with PU-pads	29
6.16	Therapy tray	29
6.17	Lap belt	30
6.18	Ankle hugger	30
6.19	Abduction block, swingaway	30
6.20	Tip-assist	30
7	Transportation	30
7.1	In the trunk (luggage space) of a car	30
7.2	Using CLEO Teen for bus transport	31
7.3	General	31
7.4	Securing the wheelchair during bus transport	31
7.5	Buckle up the wheelchair passenger	32
7.6	Transfer - getting into or out of the wheelchair	35
7.7	Anti-tippers to override steps	35
8	Storage	36
9	Recycling and disposal	36
10	Maintenance and operating life	37
11	Specifications	38

1 Model identification

1.1 Model identification (label)

(The label is placed on the axle tube)

The image shows three identical labels for a HOGGI CLEO Teen Aktivrollstuhl. Each label contains the following information:

- Colour code:** 3290-00SB-XXX
- Item number:** MD
- Size:** 202105/28
- Serial number:** 2021178999
- CE label:** CE max. load 75 kg
- Classification / Product name:** CLEO Teen Aktivrollstuhl
- Manufacturing date:** 202105/28
- Maximum load / load capacity:** 75 kg
- Manufacturer:** HOGGI GmbH
- Place of manufacture:** 56235 Ransbach-Baumbach
- Year of manufacture:** 2021
- UDI Code:** (01)04047349096062(21)202178999

Callouts on the right side of the labels point to these specific fields:

- Colour code
- Item number
- Size
- Serial number
- CE label
- Classification / Product name
- Manufacturing date
- Maximum load / load capacity
- Manufacturer
- Place of manufacture
- Year of manufacture
- UDI Code

1.2 Basic configuration

- powder coated rigid aluminium frame
- growth capacity in seat depth
- 1 Size SB : 34 - 42 cm in 2 cm steps
- Convertible to other seat widths
- Seat height front: 40 cm up to 53cm
- Seat angle: approx. 0° up to 12° in 3° steps
- Seat panel on seat frame
- Footrest hanger 90° including ABS-foot-plate
- Backrest angle: -10° up to +10°
- Seat and backrest panel, or adjustable back cover
- Clothes cover
- **HOGGI** Extra light rear wheels with silver aluminium push-rims (removable via quick-release axle)
- **HOGGI** light brakes
- Wheel camber selective 6°, 9° or 12°
- Load capacity: 75 kg

1.3 Environmental conditions

Environmental factors such as temperature and humidity can affect the wheelchair to damage. The manufacturer recommends that **CLEO Teen** should be used without condensation at ambient temperatures between -20 ° C and + 40 ° C and a humidity of 5 to 100%.

Attention: While staying in the sun for a long time, parts of the wheelchair can get hot. Be sure to!

2 Common information

2.1 Preface

Thank you for selecting the **CLEO Teen** wheelchair. We have designed this high-quality product to make your life safer and easier, and we've included this manual to help you use and care for it. Please read the following instructions to make sure you use this product as recommended.

If you have any further questions, or if you have any problems, please contact your health-care provider. We hope that **CLEO Teen** meets your expectations.

We reserve technical modifications regarding the specified model in this manual. Before using the wheelchair the first time, this manual has to be read and understood by patient and support personnel in order to ensure a safe handling with the wheelchair.

2.2 Application

CLEO Teen wheelchair is designed solely for individual indoor and outdoor use by children and adolescents who are unable to walk or who have a walking impediment, and can be operated by the patient or by another person.

Assistance may be required due to:

- Paralysis (paraplegia / tetraplegia or tetraparesis)
- Loss of limbs (dysmelia/lower limb amputation)
- Infantile/spastic cerebral palsy
- Spina Bifida
- Muscle and nerve disorders
- Osteogenesis Imperfecta
- Poliomyelitis
- There are no known contraindications when used as directed.

CLEO Teen wheelchair is able to be used for further service. For further service the product has to be cleaned and sanitised efficiently. Afterwards the product has to be checked concerning condition, wearout and damage by an authorised technician. All damaged and inappropriate parts need to be changed. Some components can be used again, e.g. Rear wheels, steering wheels or push handles. Please see also the service manual for detailed information.

2.3 Declaration of Conformity

Die **HOGGI** GmbH as manufacturer with sole responsibility declares that the **CLEO Teen** wheelchair as a whole conforms to the basic safety and performance requirements in accordance with Annex I to Regulation (EU) 2017/745 of the EU Parliament and of the Council. Applicable harmonized standards have been applied. **CLEO Teen** meets the requirements of ISO 7176-8, DIN EN ISO 12182 and DIN EN ISO 12183.

2.4 Terms of warranty

Warranty applies only when the product is used according to the specified conditions and for the intended purposes, following all manufacturer's recommendations.

The manufacturer is not responsible for damages caused by components and spare parts not approved by the manufacturer.

See also § 8 of terms and conditions on: www.hoggi.de

2.5 Service and repairs

Service and repairs on the **CLEO Teen** wheelchair should only be carried out by authorized **HOGGI** dealers. Should any problems arise, please contact the dealer who supplied your **CLEO Teen**. Authorized dealers only fit original **HOGGI** spare parts. Spare parts and exchange units are available throughout the life of the product, but only a maximum of 5 years after the last product in the series was sold.

The wheelchair is made for the first user according to customer requirements. Therefore, no replacement wheelchair is available in the initial configuration. To ensure correct delivery of spare parts, the serial number of your wheelchair is needed.

We would be happy to help you find a dealer near you.

You can reach us at: info@hoggi.de

2.6 Duty to inform serious cases

All serious incidents that have occurred in connection with the product must be reported to the manufacturer, the specialist trade and the responsible authority.

2.7 Product safety / product recalls

You can find out about new information on product safety and product recalls from specialist retailers or directly from the manufacturer at www.hoggi.de

For Preparing, repair and service, the following tools are required:



- Allen wrench, size: 3 mm, 4 mm, 5 mm
- Socket wrench, size: 8 mm, 9 mm, 10 mm, 13 mm, 17 mm
- Spanner, size: 8 mm, 9 mm, 10 mm, 11 mm, 19 mm, 22 mm, 24 mm
- Slotted screwdriver
- Needle-nose pliers
- Torque wrench



Further CLEO Teen documentation:

- Service manual
- Spare parts catalogue

3 Safety instructions

3.1 Meaning of symbols

**Caution!**

Warning of possible danger of accident and injury. Warning of possible technical damage.

**Information!**

About use of product.

**Information!**

For service-personnel.

**Attention!**

Read manual before use!

3.2 Common safety instructions



Read manual completely before use! Familiarize yourself with handling and functions of the wheelchair before use and practice the handling.

You are responsible for the safety of your child. The safety of your child could be affected if you do not follow the instructions of this manual. Nevertheless not all possible circumstances and unpredictable situations can be covered by this manual. Reason, care and circumspection are not features of the product, they are required of persons, who use the wheelchair or attend it. The person, who is using the wheelchair and its accessories should understand all instructions. It must explained to every other person using the wheelchair and its accessories. If instructions are not clear and further explanations become necessary, or if you have further questions please contact your **HOGGI** dealer. Practise with the new wheelchair on even, straightforward terrain first, together with the child. Together with the child, learn how the wheelchair reacts when the centre of gravity shifts; for example on slopes or inclines or when clearing obstacles such as steps and curbs. This should be done only with assistance from another person. Using an anti-tip is strongly recommended for inexperienced wheelchair users.



Strap in your child at all times, when it is in the wheelchair.



HOGGI points out, that any use beside the typical use can be dangerous. The wheelchair is not suitable for jogging, running, skating or similar activities. Swivelling front wheels tend to wobble at higher speed, which can cause a sudden stop and tip over of the wheelchair. Use the wheelchair only at regular walking speed. Under no circumstances leave the handle bar while pushing and never push the wheelchair away.



The wheel chair should only be used on solid level ground.



Use your wheelchair as intended by the manufacturer. For instance, do not drive into obstacles (including steps, curbs, piece of furniture).



To clear obstacles such as steps and curbs, tilt the wheelchair onto the rear wheels (pull it backwards to go up; to descend, slowly lower it forward).
If only one attendant is available when ascending or descending stairs, an incorrectly set anti-tip (if mounted at all) can lead to severe falls. Adjust the anti-tipper so that it does not come in the way of the steps during transport. Afterwards, swing the anti-tipper back to its operational position.



Do not go up or down stairs without the assistance of another person. If devices such as ramps or elevators are available, please use them. Ensure that the anti-tip (if mounted) is outside the danger-area. If wheelchairfriendly access is missing, two attendants must carry the wheelchair over the obstacle. The wheelchair should be lifted only by touching tighten parts of the frame (on the side frame above the front wheels and on the push handles which are fixed on the backrest base - if brakes are closed, also the push-rims can be used for lifting).



When ascending slopes or ramps and when crossing obstacles on upward slopes, always lean the wheelchair user's upper body far forward. When descending slopes, do not drive without braking and reduce your speed. Reduced load on the casters due to centre of gravity shifting can cause the casters to flutter.



If you have to park on a slope, face the wheelchair uphill with the brakes engaged and ensure that the seat is in the upright position. There is a risk that the pushchair might tip over backwards if the seat is the reclined position.



Before leaving the wheelchair and before getting into and out of it, always lock the wheel locks



- Don't use the footrest to get into and out of the wheelchair generally.
- Use the footrest with shoes only.



Depending on footplate settings and wheelchair geometry, the wheelchair may tip over if the user boards the chair using the footplate. First practise boarding the chair with the child and an attendant who can secure the wheelchair, and modify footplate and seat height settings if the chair has a tendency to tip over. In addition, turn the caster fork to the front prior to using the footplate for getting into the wheelchair; this increases the wheelbase and thereby the wheelchair's stability against tipping.



The effectiveness of the wheel lock and the overall driving quality are dependent on adequate air pressure. With properly inflated rear wheels and even tyre pressure on both sides, your wheelchair is much easier to operate and manoeuvre. Before starting to use your wheelchair, check that the tyres are inflated correctly. The required air pressure is printed on the side of the tyre. For rear wheels, it should be at least 6 bar..



All brakes acting on the tyres do not serve as service brake but are only designed as parking brake (wheel lock). The wheel locks must not be used as driving brakes for slowing down the wheelchair, as in extreme cases, the abrupt stopping of the wheelchair can lead to falls.



Please keep packaging material away from children. Plastic packaging presents the danger of suffocation.



Disposal of waste: The packaging material as far as metal, aluminium and plastic parts can be recycled. The recycling must be operated according to the national and legal terms



Check the condition of the product if the packaging shows damages.



Never leave your child unattended in the wheelchair even when they are strapped in and the brakes engaged.



In the dark, the user should wear light clothing or clothing with reflectors in order to improve visibility. Ensure that the reflectors are installed on the sides and rear of the wheelchair. We also recommend installing active lighting



Extreme settings (e.g. shortest wheelbase and seat in the backmost position) combined with an unfavourable body posture can cause the wheelchair to tip even on level ground.



When driving uphill, the static stability can be less than 10° inclination. Hanging heavy bags or similar on the push bar or push handles can also have a negative effect on stability. It is absolutely necessary to activate the anti-tipper.



Adjustments with a high active degree demand a practised driver and the use of an anti-tip.



Under no conditions should the anti-tip(s) assume the function of transport wheels, for example to transport a person in the wheelchair with the rear wheels removed. The antitips must audibly lock in place, before it is able to bear loads. Firm seating must be verified by the user or by an attendant.



The maximum load for the **CLEO Teen** is 75 kg.



Accessories and add-ons reduce the maximum load proportionately



We recommend that, wherever and whenever possible, users transfer to the seats installed in the motor vehicle and use the corresponding vehicle restraint systems, because this is the only way to ensure optimum protection of the passengers in case of an accident.

CLEO Teen is admitted for use as a seat in a motor vehicle If base plates carbon are installed, it is not allowed to use **CLEO Teen** tie down kit.



Be careful in case of extreme temperatures. The wheelchair can heat up significantly in the sun or in the sauna. In extreme cold, there is a risk of hypothermia. **CLEO Teen** is not suitable for use in the sauna. Slowing down from high speeds or when descending longer slopes tends to heat up the hands and fingers, especially if using aluminium push rings. When using the wheelchair outdoors, leather gloves should be worn. Gloves provide the wheelchair user with a better grip and protect his or her fingers from dirt and hot metal. For sensitive skin, we recommend using gloves similar to those used in cycling (finger cots with a leather inside - but never wool gloves).



Always pay attention to the correct setting of the thru axles on the rear wheel. The rear wheel must not be able to be removed if the button on the thru axle is not pressed.



Neither seat nor backrest height may be exceeded.



The assembly of a seat shell is only permitted within the specified seating area. The manufacturer of that new product combination has to test the stability and the adherence of the maximum load before commissioning. When applying seat and backrest panels always use upholstered seat cushions to avoid to avoid dents.



Avoid reaching into any clamping range. Danger of clamping exist in following assembly groups:

- Brake lever (if **CLEO Teen** is supplied with fender with integrated brake system)
- Between brake lever and rear wheel



The wheelchair should be lifted only by touching tighten parts of the frame (on the side frame above the front wheels and on the push handles which are fixed on the backrest base - if brakes are closed, also the push-rims can be used for lifting).



The **HOGGI** seat cushion (Trevira CS) and the contoured seat cushion (Trevira CS) as well as the **HOGGI** nylon backrest abd seat cover are flame resistant referred to the EN 1021-1 and EN 1021-2 norm.



Please read to visually handicapped people the manual and info material - or use electric aids. Please download or read all **CLEO Teen** documents on our webside www.hoggi.de



Whenever you change any settings on the wheelchair, make sure that you firmly tighten any screws that have been loosened.



ATTENTION: The central push handle must not be used in connection with additional drives. Additional drives increase the total weight of the wheelchair, so the connection of the central push handle is subjected to higher loads. In this case, **HOGGI** assumes no liability.



ATTENTION: Depending on the seat width, camber and rear wheel size of the wheelchair, the total width of the wheelchair can exceed the maximum recommended dimension of 700mm. When using escape routes, it must be noted that the wheelchair user may have to be transported through the escape route without a wheelchair, or can be transferred to an evacuation chair in order to use escape routes unhindered. Make sure that the wheelchair left behind is not an obstacle for other people. After removing a drive wheel, the wheelchair can be pushed freely through the escape route.



Always make sure that when transporting in the car, the tensile force per belt (max. 10 kg) must not be exceeded, otherwise damage can arise on the frame of the wheelchair



Information about product safety or product recalls as well as all contact details are available on our website at www.hoggi.de.



4 Delivery and preparing for use

Your **CLEO Teen** wheelchair will normally be supplied completely mounted with removed rear wheels and if necessary removed anti-tippers.

Delivery in board:: 730 mm (L) x 630 mm (W) x 630 mm (H)

Please check the condition of the product if the packaging shows damages.



Please remove the transport packaging carefully

The original package contains the following parts:

- Wheelchair with mounted push-bar
- Rear wheels and quick-release axles unmounted
- Front castors already mounted in the front castor forks
- Already mounted anti-tip
- Additional accessories as ordered (These have to be mounted on the wheelchair by an authorized dealer)
- Instructions and list of tools required

To prepare the wheelchair for use please proceed as follows:



- Grip the head of the quick-release axle as illustrated and press the release knob.
- Whilst pressing the release knob, position the quick-release axle into the rear wheel bearing.



- Place the wheelchair onto the front castors and lift the wheelchair at the back clamp
- Insert the rear wheel and the quick-release axle into the axle housing. Hold the spokes close to the wheel hub and press the release knob with your thumb. The rear wheel can then be easily slid into position.
- Make sure that the thru axle is securely locked in the mounting socket!



CAUTION!

Push each rear wheel to check that each quick-release axle is safely located.

If your wheelchair is supplied with an anti-tip it could be in hinged position for transportation



- Place yourself behind the wheelchair and move the anti-tip with the foot downwards.

- Turn the anti-tip with the foot to the inside into the active position.

The active position is reached if the anti-tip is snapped audibly.

CLEO Teen can also be equipped with two pre-assembled anti-tippers.
The illustrations show an anti-tip in the „active“ position.



The length of the tubes can be adjusted in three positions.
The anti-tip should be adjusted that it is 2-3 cm above the ground.



Swingaway of the anti-tip:

- Place yourself behind the wheelchair and move the anti-tip downwards with your foot.



- Turn the anti-tip with the foot to the inside until the inactive position is reached.

The inactive position is reached if the anti-tip is snapped audibly.





The illustration shows an anti-tip in the „inactive position.



If your **CLEO Teen** wheelchair is supplied with a footrest from **HOGGI**, it is possible that it is folded up for the transport.

- Move the footrest downwards as pictured.



Don't use the footrest to get in or out of the wheelchair



If your **CLEO Teen** wheelchair is supplied with seat or back upholstery from **HOGGI**, please proceed as follows:

- Pull the back upholstery with the cap over the top edge of the back panel and fix the upholstery on the pre-assembled velcro.



- Slide the upholstered seat cushion under the backrest and lay the seat cushion on the seat surface as illustrated.



- Fix the front latch with the press buttons at the front edge of the seat surface as illustrated.

-
- Fasten the flap of the seat cushion to the back edge of the seat surface and fix it with the press button.



If your **CLEO Teen** wheelchair is supplied with a contoured seat cushion from **HOGGI**, please proceed as follows:

- Fix the fleece which is included in delivery on the left and right side of the seat panel.



- Place now the contoured seat cushion on the seat panel (beginning at the back end.)



- Fix both upholstery latches with the press buttons at the front edge of the seat surface.



If your **CLEO Teen** wheelchair is supplied with an one hand push-handle from **HOGGI**, please proceed as follows:

- Place yourself behind or next to the wheelchair.
- Open the cam lever as illustrated.





- Press in the spring button and slide the one hand push-handle until it clicks into position



- Close the cam lever.



CAUTION!

Check with a jerk on the one hand push-handle, whether the spring button is securely engaged and the extender lever is securely locked!



CAUTION! The one hand push-handle must not be used in connection with additional drives. Additional drives increase the total weight of the wheelchair, so the connection of the one hand push-handle is subjected to higher loads. In this case, **HOGGI** assumes no liability



If your **CLEO Teen** wheelchair is supplied with a push-bar from **HOGGI**, please proceed as follows:

- Place yourself behind or next to the wheelchair.
- Open the cam lever on both sides



- Place the push-bar down into their locating brackets.



- Make sure, that both spring buttons clicked into position below the locating brackets.

- Close the cam lever on both sides



CAUTION!
Press on the push-bar to ensure that it is securely located.



If your **CLEO Teen** wheelchair is supplied with push-handles from **HOGGI**, please proceed as follows:

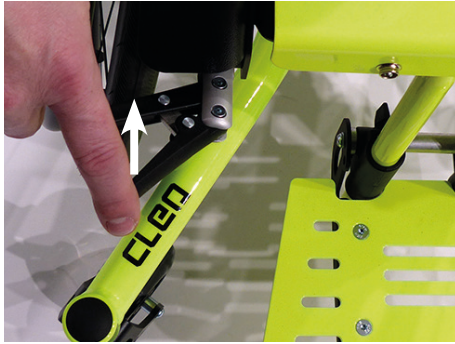
- Place yourself behind or next to the wheelchair.
- Open the cam lever on both sides.
- Place the push-handles down into their locating brackets and make sure that both spring buttons clicked into position below the locating brackets.
- Make sure, that both spring buttons clicked into position below the locating brackets (on both sides).
- Close the cam lever on both sides.



CAUTION!
Press on the push-handles to ensure that they are securely located.



5 Adjusting and adaptation possibilities



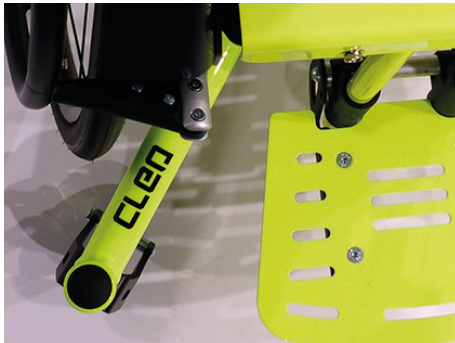
5.1 HOGGI light brake

Press the brake lever below to lock the wheel lock



CAUTION!

All brakes acting on the tires do not serve as a slow down brake but are only designed as a parking brake (wheel lock). The wheel locks must not be used as driving brakes for slowing down the wheelchair, as in extreme cases, the abrupt stopping of the wheelchair can lead to falls.

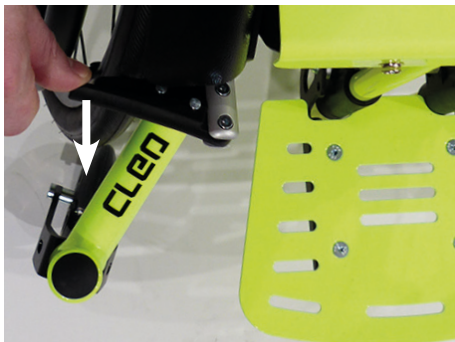


The illustration shows a closed **HOGGI** light.



CAUTION!

The effectiveness of the wheel lock are dependent on adequate air pressure. Before starting to use your wheelchair, check that the tires are inflated correctly. The required air pressure is printed on the side of the tires. For rear wheels, it should be at least 6 bar



- To release the **HOGGI** light brake pull the brake lever upwards.



5.2 Wheel lock (wheel lock lever integrated in wheel guards)

- To apply the brakes press down on the brake lever with the fingers or with the palm of your hand.



CAUTION!

All brakes acting on the tires do not serve as a slow down brake but are only designed as a parking brake (wheel lock). The wheel locks must not be used as driving brakes for slowing down the wheelchair, as in extreme cases, the abrupt stopping of the wheelchair can lead to falls.



The brake shoe presses on the tires and grips it tightly. The brake shoe is, therefore, at a 90° angle to its holder. The brake shoe should overlap 3-5 mm to the middle of the wheel.



CAUTION!

The effectiveness of the wheel lock are dependent on adequate air pressure. Before starting to use your wheelchair, check that the tires are inflated correctly. The required air pressure is printed on the side of the tires. For rear wheels, it should be at least 6 bar.

- To release the wheel lock pull the brake lever upwards as shown.



When the wheel lock is released the brake shoe should be 12-15 mm from the wheel.

This distance can be adjusted by the adjustment screw or by displacing the wheel lock on the mounting clamp.

The wheel locks should only be adjusted by a technician.

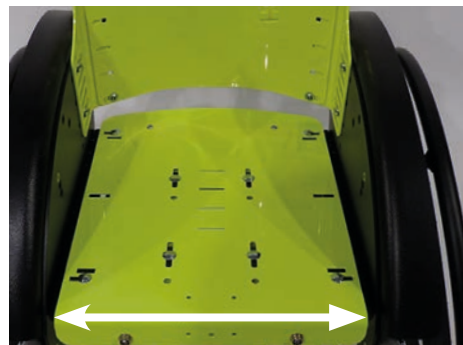


5.3 Seat width

For **CLEO Teen** seat widths from 34 cm up to 42 cm are possible.

The **seat width** gets measured between the base plate respectivel between the wheel guards.

The wheelchair will be built in accordance with the customer's order. It is possible for the technician to modify the wheelchair with a different seat width.

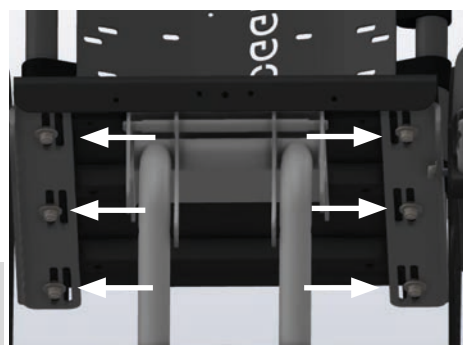
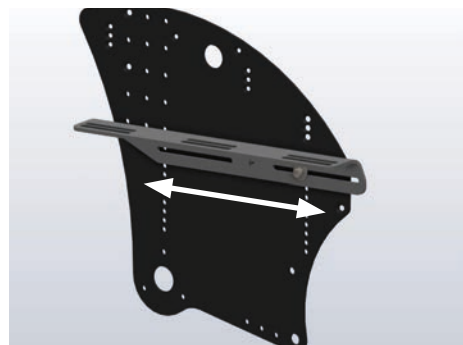


5.4 Seat height, Seat depth, Seat angle

The **seat height**, **seat depth** and **seat angle** can be adjusted in two ways.

1. Loosen the marked screw connection on both sides of the base plate and select the desired seat depth by moving the angles. Afterwards fasten all conncections again.
2. Using the 6 marked screws under the seat plate, the seat plate can also be moved in relation to the support brackets.

The wheelchair will be built in accordance with the customer's order. It is possible for the dealer to modify the camber of the rear wheels.

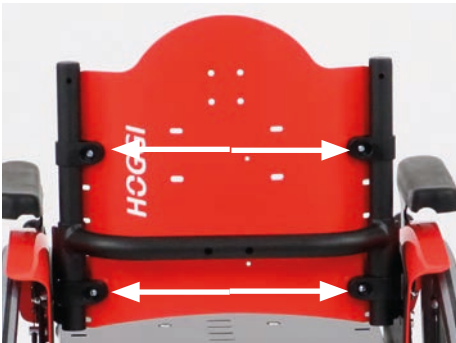


Whenever you change any settings on the wheelchair, make sure that you firmly tighten any screws that have been loosened.



The **CLEO Teen** wheelchair can be supplied with rear wheels inclined (**camber**) 6°, 9° or 12° from the vertical. The illustration shows the camber adapter.

The wheelchair will be built in accordance with the customer's order. It is possible for the dealer to modify the camber of the rear wheels.



5.5 Backrest height

CLEO Teen is equipped with either an adjustable back cover or a back panel.

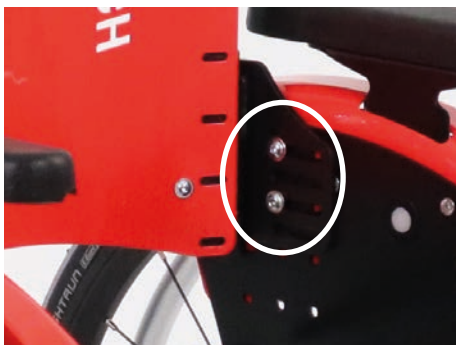
Basically, different back bases and back panels are available in heights of 20/25/30/35 cm. However, the back height can be additionally changed after loosening the marked screw connections (on both sides) by pushing the clamps with the back plate up and down.



The backrest height can also be adjusted by moving the backrest base in relation to the base plates.

The back height is measured at the horizontal area of the upper back edge opposite the seat surface.

The wheelchair will be built in accordance with the customer's order. It is possible for the dealer to modify the backrest height.



5.6 Backrest angle

- The backrest angle can be adjusted in height after loosening the marked screw connections (on both sides).

The wheelchair will be built in accordance with the customer's order. It is possible for the dealer to modify the backrest angle.



5.7 Active degree

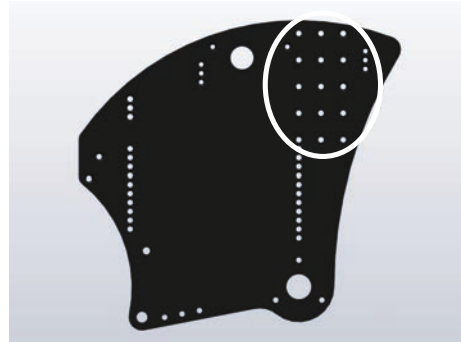
The active degree describes the relation of the backrest position to the rear wheels. The more the backrest is positioned to the rear of the axle, the more active the wheelchair can be driven. That means contrary a safer driving position if the adjustment is set above or in front of the rear axle.



CAUTION!

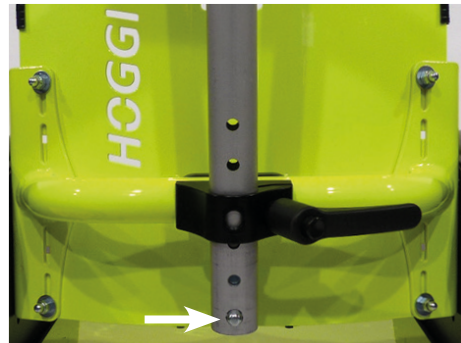
Adjustments with a high active degree should only be made for a practiced driver using the anti-tip.

The active degree is getting adjusted via the built-in position of the backrest panel on the base plate. There are three different backrest positions on the base plate which can be selected.



5.8 Height adjustment of the one hand push-handle

- Open the cam lever.
- Press in the spring button and slide the one hand push-handle until it clicks into position.
- Make sure, that the spring button clicked into position below the locating brackets.



- Close the cam lever.



CAUTION! Press on the one hand push-handle to ensure that it is securely located.



TIP:

By turning the one hand push-handle to the front as illustrated it is possible to walk beside the wheelchair and to keep (eye) contact to the child.

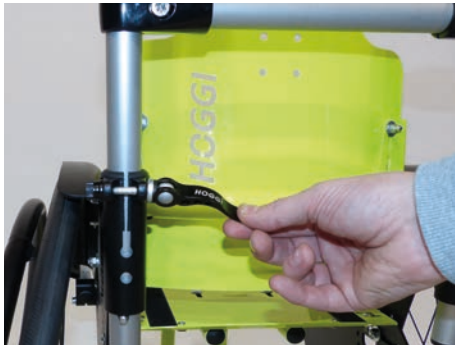




5.9 Height adjustment of the push-bar

The ratchet joints on the push bar allow the handles to be adjusted to a comfortable grip height for the person pushing the wheelchair.

By pressing the knobs on both ratchet joints, the push bar can be turned to the required position.



5.10 Height and angle adjustment of the push-handles

The push-handles can be adjusted in height and in angle.

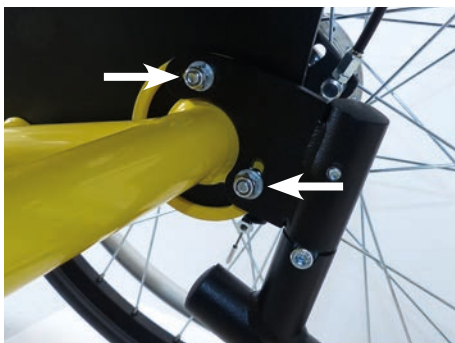
- Open the cam lever on both sides.
- Press both spring buttons simultaneously and slide the pushhandles in the desired height position.



- Make sure, that the spring button clicked into position below the locating brackets.
- Loosen both marked screw connections in the cross bar and select the desired angle position.
- Tighten both screw connections again.
- Close the cam lever on both sides.



CAUTION!
Press on the push-handles to ensure that it is securely located.



5.11 Anti-tip

- The angle of the anti-tippers can be adjusted infinitely variable by loosening the screws.



Whenever you change any settings on the wheelchair, make sure that you firmly tighten any screws that have been loosened.

The anti-tip should be adjusted that it is 2-3 cm above the ground.



Press the snap button and choose the desired length position. The length of the anti-tipper tubes can be adjusted in the anti-tipper bracket in three positions 2.5 cm apart.



5.12 Detaching the rear wheels with quick-release axles

The rear wheels are removed by means of a quick-release mechanism. This reduces the volume of the wheelchair for transportation.

- Tilt the wheelchair onto the front castors and lift it by holding the rear edge of the seat.
- Grip the spokes close to the wheel hub and, with the thumb, press the release knob of the quick-release axle.
- Pull the rear wheel with the quick-release axle out of the axle housing.
- To avoid a risk of snagging, it may be preferable to withdraw the quick-release axles from the rear wheels.
- To re-assemble the rear wheels refer to section: „4 Delivery and preparing for use“.



CAUTION!
Push sharply on each rear wheel to ensure that the quickrelease axles are securely located.

5.13 Pneumatic tires / PU-tires

The rear wheels can be supplied with pneumatic tires. The car type valves enable the tyres to be checked or inflated at any petrol station or by means of a suitable pump, supplying a minimum 6 bar pressure

Check the maximum tire pressure, which is indicated on the tire





Pneumatic wheels are equipped with tubes. They can be repaired using repair material available from bicycle dealers.

The drive wheels can also be supplied with solid PU-tyres (right).

• **Information about the service in the event of tire damage can be found under 2.5**

5.14 Push rims



Push rims can be supplied in aluminium or stainless steel according to preference.

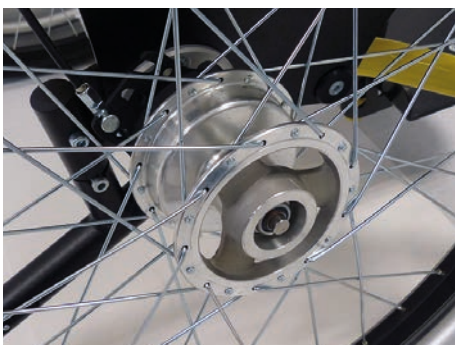


Push rims can be supplied with a standard diameter or with a larger diameter. These are called respectively hand rims “standard” or push rims “high”

The wheelchair will be built in accordance with the customer’s order. It is possible for the retailer to fit alternative push rims.



Push rims can be mounted close to the rear wheel or a little further apart. A future modification is possible again.



5.15 Drum brakes

In addition to **HOGGI light** brake, the CLEO Teen wheelchair can be fitted with drum brakes.

The drum brakes are activated from the push-bar or push-handles.

Each drum brake gets operated by a brake lever

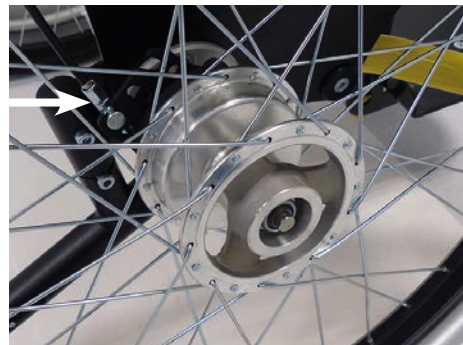


- To apply the drum brake squeeze the brake lever.
- With the finger tips press the rocking catch, until it locks with a click and release the brake handle.

When the brake lever is squeezed again, the rocking catch is unlocked and the drum brake can be released.



The brake force can be adjusted by the adjustment screw



6 Accessories

All accessories not installed by the manufacturer must be installed by trained technicians. The following notes on installation are for your information but should be performed by trained technicians.



Straps on accessories are usually extra long to accommodate every option. Shorten excess strap ends on accessories so that they can not be trapped. To prevent strap ends from fraying the cut ends can be melted together with a flame. (eg. cigarette lighter).

6.1 Seat panel

The wheelchair was built in accordance with the customer's order.

Functions and adjustments of the seat panel are described under „5.4 Seat height, Seat depth, Seat angle“.





6.2 Backrest panel

The wheelchair was built in accordance with the customer's order.

Functions and adjustments of the backrest panel are described under „5.5 Seat height“ and „5.6 Backrest angle“.

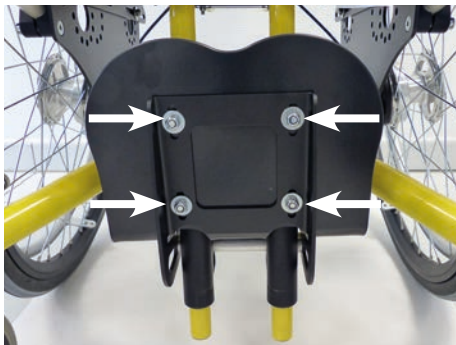


6.3 Foot rest hanger 90° (knee angle)

Mounted foot rest hanger 90° available for different lower leg lengths:

LLL-short: 13- 26 cm

LLL-long: 13 - 36 cm



6.4 Footrest depth / Footrest angle

The foot rest can be folded upwards.



To get in the wheelchair the footrest must be always folded upwards.

The position of the foot rest can be adjusted by loosening the four screws on the foot rest bracket.

This alters the location of the foot rest and, therefore, also the foot rest angle.

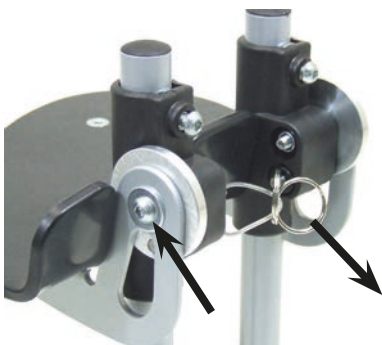


The angle of the foot rest can be adjusted from approximately 80° to 100°.

- Afterwards, retighten the screws securely.



Whenever you change any settings on the wheelchair, make sure that you firmly tighten any screws that have been loosened.



6.5 Footrest bracket with interlocking

The foot rest bracket can be supplied additionally with a locking device. When adjusting the foot rest angle, the locking device must also be adjusted, by loosening the screws on the right and the left side. By pulling the release ring, the foot rest can be folded upwards. When the foot rest is folded down, it will automatically lock into position.



All four screws on the footrest must be fixed.

6.6 ABS-foot-plate, black, flat

ABS-foot-plate to position the feet.



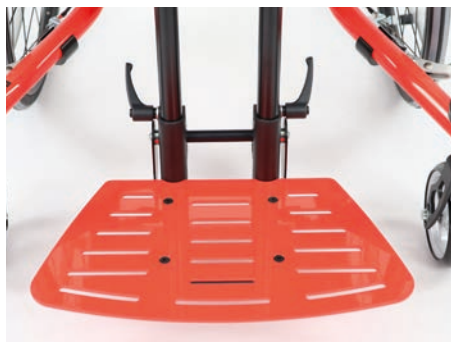
6.7 ABS-foot-plate, black, with heel stop

ABS-foot-plate to position the feet with additional heel stop. The heel stop prevents the sliding of the feet.



6.8 Aluminium footrest, flat

Aluminium footrest to position the feet.



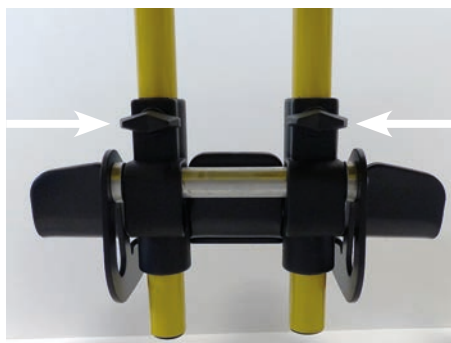
6.9 Lower leg length

After releasing both wing nuts on the footboard bracket it is possible to adjust the required lower leg length continuously.

- Retighten the wing nuts securely

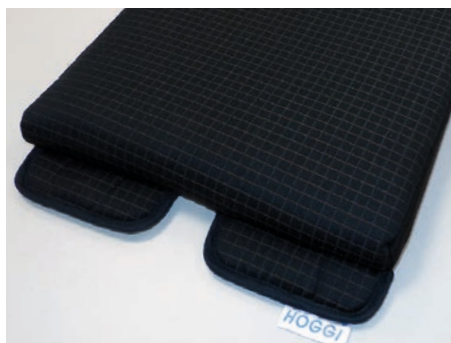


Whenever you change any settings on the wheelchair, make sure that you firmly tighten any screws that have been loosened.



6.10 Seat cushion

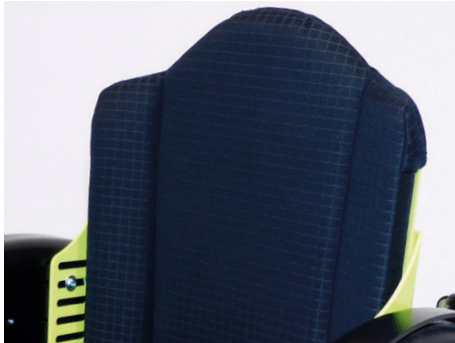
The **HOGGI** seat cushion is 3 cm thick and is foam filled. The cushion cover is washable and can be unzipped to remove the foam pad..





6.11 Contoured seat cushion

Contoured seat cushion, with abduction, leg control and set out for sitting bones, with cover made of Trevira CS.



6.12 Backrest cushion

The **HOGGI** back cushion is 2,5 cm thick and is foam filled. The cushion cover is washable and can be unzipped to remove the foam pad.



6.13 Spoke guards

The spoke guards prevent the child's fingers from being trapped in the spokes.

The transparent spoke guards can be painted by the child or have decorative stickers applied.

For coloured spoke guards please visit our homepage www.hoggi.de or ask for our spoke guards brochure.



6.14 Headrest standard with cushion

This headrest is only lightly contoured and serves as a contact surface for the back of the head. This headrest can be mounted on the backrest panel.



After loosening both cam levers the headrest can be adjusted in the height.

The cover can be removed for cleaning.



Whenever you change any settings on the wheelchair, make sure that you firmly tighten any screws that have been loosened.

6.15 Armrests with PU-pads

The armrests are integrated in the wheel cover and are both removable and adjustable in height.



- Press the white button as illustrated while choosing the desired height position of the armrest.



The armrest snaps into place audibly.



6.16 Therapy tray

The therapy tray can be mounted with terminal strips on the armrests. The terminal strips are preset to the distance of the armrests.

- Loose the knurled nut and press the clamp.
- Position the therapy tray on the armrests.
- Tighten the knurled nut.



The illustration shows a **CLEO Teen** wheelchair with armrests and therapy tray.





6.17 Lap belt

Open the lap belt by pressing the red button.

When the lap belt is fastened, fine adjustment can be made by pulling one free end of the belt.



6.18 Ankle hugger

By using the ankle straps feet and ankles can be comfortably positioned. The ankle straps are passed through the rings on the footrest. This holds the heels against the raised heel plate at the rear of the footrest.

The ankle straps can be adjusted and then fastened with Velcro

The fastening should always be on the outside.



6.19 Abduction block, swing away and detachable

The abduction block guides the thighs apart.

By activating of the marked activator you can swing away or detach the abduction block for an easy entrance or exit.



6.20 Tip assist

The tip assist conduces to tip the wheelchair and helps the attendant consequently crossing kerbs and stairs.



7 Transport

7.1 In the trunk (luggage space) of a car

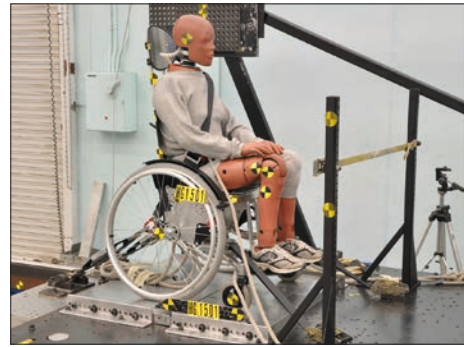
CLEO Teen wheelchair can according to size and specification, be transported as one unit with folded up footrest and removed pushbar. To achieve the most compact folding package fold the footboard, remove the rear wheels (if applicable), the steering wheels, the anti-tip assemblies and, if applicable, the one hand push bar/ push bar/ push handles

7.2 Using CLEO for bus transport



CAUTION!

We recommend that, wherever and whenever possible, users transfer to the seats installed in the motor vehicle and use the corresponding vehicle restraint systems, because this is the only way to ensure optimum protection of the passengers in case of an accident. **CLEO Teen** is admitted for use as a seat in a motor vehicle



7.3 General

- Check that your wheelchair is suitable for a crash test.
- Check that the vehicle is equipped and compatible for transporting your wheelchair.
- There should also be enough space for safe transport.
- During transport ensure an upright sitting position.



Please note that improper use of a wheelchair in a wheeled ambulance can be dangerous beyond typical use. Failure to follow this advice will result in serious injury or death.

Always make sure that the tractive force per belt (max. 10 kg) must not be exceeded when transporting in the bus, otherwise the frame of the wheelchair could be damaged.

7.4 Securing the wheelchair during bus transport



We recommend that, wherever and whenever possible users transfer to the seats installed in the motor vehicle and use the corresponding vehicle restraint systems, because this is the only way to ensure optimum protection of the passengers in case of an accident. **CLEO Teen** was successfully tested in accordance with ISO 7176-19 (Crash Test). It is, however, possible to use **CLEO Teen** as a seat in a motor vehicle, if our "Tie down Kit" as well as appropriate restraint systems are used. Your **CLEO Teen** is admitted for use as a seat in a motor vehicle yet.



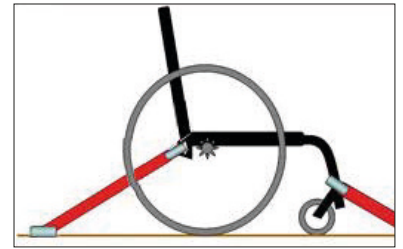
CLEO Teen may only be used forward in the direction of travel..



The wheelchair was dynamically tested in the direction of travel while the dummy was attached with lap belt and shoulder strap

- 1) If the user finds itself in the rehab pushchair, the rehab pushchair has to be positioned forward and has to be fixed with the fastening and safety belts according to the instruction for use of the restraint system manufacturer (fastening belts referred to WTORS need to fulfil the requirements of ISO 10542 or SAE J2249).
- 2) The wheelchair has not been tested for transportation in another position. The transportation in a lateral directed position for instance is not allowed at all.

-
- 3) Depending on the size of the pushchair the maneuverability can be impaired, so that the turning of the pushchair is not or only partially possible, to position the stroller forward in the direction of travel.
- 4) The wheelchair has to be fixed with a restraint system referred to ISO 10542 or SAE J2249 with fixed belts in the front and adjustable belts in the back. Usually this concerns snap hooks/ s-shaped hooks as well as plug closures. The restraint systems usually consist of 4 single belts, which have to be attached to the 4 edges of the pushchair.



- The attachment points of the pushchair restraint systems are marked with the international hook symbol.
- 5) The wheelchair may also be supplemented for transport with other positioning and fixation systems. However, these are not a substitute for passenger and rehab pushchair restraint systems and may limit user comfort.



CLEO Teen may only be used forward in the direction of travel.



The wheelchair was dynamically tested in the direction of travel and the dummy was there fastened with lap belt and shoulder strap.



In order to reduce the risk of injury to vehicle occupants, tools that are not specifically designed for crash safety, should be removed and stored separately in the vehicle safely such as eg crutches, loose pillows, therapy tables etc.



Without consulting the manufacturer, no changes may be made or replaced at the points of attachment of the wheelchair or to components of the chassis and frame. Failure to comply with these requirements, the wheelchair may not be transported in vehicles

7.5 Buckling the wheelchair passenger



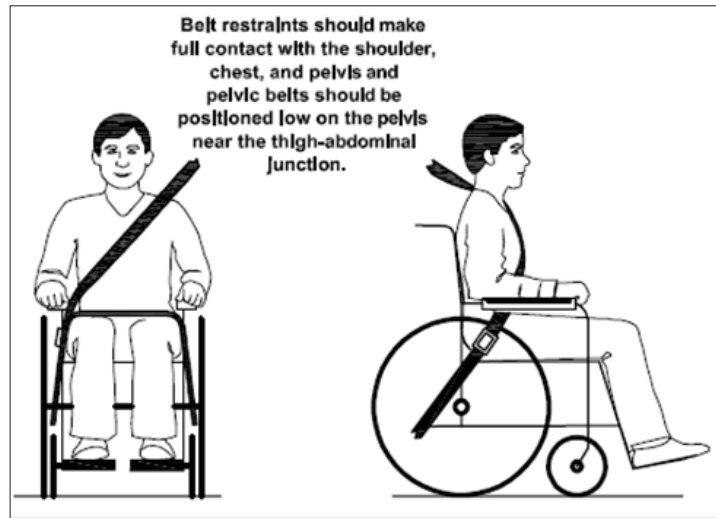
The user has to be buckled up with the lap belt as well as the shoulder belt.



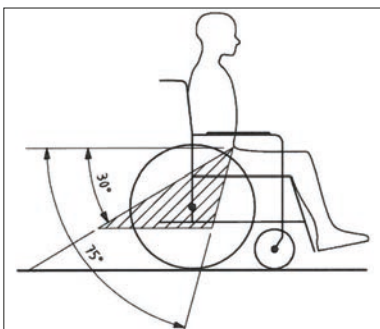
Shoulder and lap belts should be used to minimize and / or avoid potential injury from impact on vehicle components.

- 1) The person executing the attachment should be trained in the handling of the system.

2) Before transportation the following adjustments of the rehab buggy have to be carried out:
 Seat: 0° - 5°
 Backrest: 90° - 100°
 Footrest: 90°



3) The angle between lap belt and horizontal has to be 30° - 75°. An angle close to 75° is preferable.



4) The shoulder belt has to run across to chest and shoulder. The belt may not but at the neck and may not be attached loose from the shoulder.



The lap belt and the shoulder belt must be flat and as tight as possible against the body and must not be damaged by components such as e.g. Armrests or wheels are kept away from the body and must not restrict user comfort.

5) The belt strap may not be twisted.



As far as possible all additives should be detached and stored securely: • crutches, loose cushions and therapy trays.

6) The user's head should be additionally secured by a separate and permanently mounted headrest in the bus.



You should not rely on the occupant restraint systems unless they are marked in accordance with the requirements of ISO 7176-19: 2008.

7) During transport, the drum brake must not be tightened.

8) Please lock the manual brake firmly.



Care should be taken that the occupant restraint is positioned so that in the event of an accident, the release button is not triggered by pushchair components and results in unintentional opening of the seat belts.

9) Remember, however: In the event of a traffic accident, the risk of injury can only be minimized and not ruled out, even if the passenger and rehab pushchair restraint systems are used correctly.



Before reusing the pushchair after a collision or an accident with a bus, the pushchair may no longer be used for transport in a bus until it has been checked for possible damage by authorized personnel and then released again.

If you have questions about our products and transport safety devices for wheelchairs, we or your specialist dealer will be happy to help.



Attachment points, front according to ISO 7176-19



Attachment points, rear according to ISO 7176-19 for lap belt



Attachment points, rear according to ISO 7176-19

7.6 Transfer getting into or out of the wheelchair



ATTENTION!

- Always lock the wheel locks before getting into or out of the wheelchair.
- First practise boarding the chair with the child and an attendant who can secure the wheelchair, and modify footplate and seat height settings if the chair has a tendency to tip over.
- Increase the safety against tipping by turning the steering wheel fork forwards (this increases the wheelbase).



For adolescents it can be advantageous, according to age, weight and ability, to make a transfer over the side of the wheelchair.

- Firstly position the wheelchair at an angle of 45° to the seat or wheelchair, from which a transfer is to be made.
- Lock the brakes.



For support during the transfer please use the seat / back surface, hand rims and for a short time also the side parts.

The transfer should be practiced with an auxiliary person until it is safe succeed. The move should be done in one go.

Then fold down the foot board and position your feet on the foot board. If necessary, correct the seating position. Finally, the parking brakes can be released and the wheelchair can be used.

Proceed in reverse order when exiting.

7.7 Anti-tippers to override steps



CLEO Teen can be equipped with an anti-tip unit. Anti-tippers increase the safety of the wheelchair against tipping.

Function and attachment of the footrest lock are described in „4. Delivery and preparing for use“ and „5.11 Anti-tip“.



CAUTION!

If the overriding of steps are only with the help of another person possible - a mounted or active anti-tip can lead to falls.

Adjust the anti-tip so that it can not touch the steps. After overriding the steps or similar barriers adjust the 100 anti-tip again.



8 Storage

Depending on its size and features, **CLEO Teen** can be folded in one piece with the backrest folded in and the footrest folded up to be stored.



Care instructions! Clean **CLEO Teen** thoroughly before storage. Please observe the care instructions on page 37



However, there is also the possibility to disassemble the wheelchair with a few simple steps into a few smaller packages.

The smallest size can be achieved by folding in the backrest and footrest and removing the rear wheels.



Care instructions!
Clean **CLEO Teen** thoroughly after storage.
Please observe the care instructions on page 37

9 Recycling and disposal

CLEO Teen is made from recyclable materials. The product packaging as well as all metal, aluminum and plastic parts can be recycled.

Disposal must be in accordance with the respective national, legal regulations. Please ask the city / municipal administration for local ones Waste disposal company.

10 Maintenance / Service and Repairs and operating life

Your **CLEO Teen** is CE approved. The manufacturer herewith guarantees that this medical product as a whole conforms to the basic safety and performance requirements in accordance with Annex I to Regulation (EU) 2017/745 of the EU Parliament and of the Council. The wheelchair should be checked for correct function before every use. Nuts with self-assurance should only be used once. After repeated loosening nuts must be replaced. The items listed in the following table must be checked by the user at the indicated intervals.

Check	daily	weekly	monthly
Function test of the brake/wheel lock	X		
Function test of the anti-tip	X		
Fixed seat of the drive wheels (quick-release axle)	X		
Check firmness of the footrest		X	
Air pressure (indicated on the side wall of the tyre)		X	
Gripping ring for damage		X	
Testing the screw connections			X
Visual inspection of wearing parts such as wheels and bearings			X
Contamination on bearings			X
Checking the spoke tension of the drive wheel			X
Function test of the tilt mechanism			X

Should any defects become obvious, please contact your authorized **HOGGI** dealer to eliminate them. We also recommend that you have your **CLEO Teen** serviced by your technician every twelve months.

Instructions for cleaning and maintenance

- Clean all frame components and plastic parts using mild detergents only. (e.g. Sagrotan).
- Padding parts can be washed at 40 °C. If washed in a washing machine, put them in a linen bag or a pillow case.
- In most cases, wiping with a damp cloth is sufficient.
- Do not use your **CLEO Teen** in salt water
- Keep sand or other particles from damaging the wheel bearings.
- If your **CLEO Teen** gets wet, towel-dry it as soon as possible.
- Hair and dirt particles generally accumulate between the caster wheel and fork. This can restrict the caster wheels from rotating smoothly. Remove the caster and thoroughly clean the fork and caster using a mild detergent.
- The rear wheels feature a quick-release system. To keep this system operational, ensure that no dirt adheres to the quick-release axle or axle housing. The quick-release axle should also be lightly lubricated regularly with resin-free sewing machine oil.
- Screw connections should be checked frequently, in particular when beginning to use the wheelchair and after any adjustment. If a screw connection becomes loose repeatedly, consult your dealer.



CLEO Teen operating life:

The expected operating life of **CLEO Teen** amounts to 6 years, dependent on use intensity and maintenance. We recommend a yearly check by your authorized dealer. In case of any disorders or defects it's intended to hand over the wheelchair the health care supply store or your authorized dealer.

11 Specifications

	Size 1
Seat width	340 - 420 mm
Seat depth	320 - 480 mm
Backrest height	200, 250, 300, 350 mm
Seat height* (front)	400 - 530 mm
Seat angle	approx. 0° up to 12°
Back angle	80° up to 105°
Lower leg length	200 - 410 mm
Footrest angle	adjustable approx. +/- 10°
Rear wheel diameter	24" / 26"
Wheel diameter	100, 125 or 140 mm
Camber	3°, 6°, 9°
Load capacity**/Maximum weight	75 kg
Weight ***	13 kg
Overall length maximum / minimum	790 mm / 770 mm
Overall width maximum / minimum	660 mm / 515 mm
Height maximum / minimum	850 mm / 550 mm
Weight (of the heaviest part)	11 kg



ATTENTION!

*The seat height depend on the frame size, the wheel diameter and the camber.



ATTENTION!

***Accessories and mounting parts reduce the remaining vehicle load capacity



ATTENTION!

*** Weight refer to a CLEO with basic configuration and maximum seat width

HOGGI GmbH
Eulerstraße 27 • 56235 Ransbach-Baumbach • Deutschland
Telefon: (+49) 2623 / 92 499-0 • Telefax: (+49) 2623 / 92 499-99
E-mail: info@hoggi.de • www.hoggi.de